



The Menorah



Congregation Beth HaTephila: a Reform Congregation in the heart of the Blue Ridge Mountains, Founded 1891

December 2007

Vol. 68 No. 4 (Published monthly)

Kislev – Tevet 5768

Congregation Beth HaTephila

43 North Liberty Street

(828) 253-4911

FAX: (828) 253-1553

e-mail: admin@bethhatephila.org

Web site: bethhatephila.org

Rabbi Robert J. Ratner, Ph.D.

Cantor Debra Winston

Gil Kempenich, President

SERVICES

Fridays – 7:30 P.M.

What's Inside

Board & Committee Members	2
President's Message	3
Chai Notes	4
Adult Education	5
Sisterhood News	6
Brotherhood News	6
Tzedakah Committee	7
Social Justice Committee	8
Temple Happenings	9
More Temple Happenings	10
Sacred Aging Committee	11
HardLox Thank You	12
HardLox Volunteers	13
HardLox Donors	14
Our Temple Family	15
Religious School	16
Celebrations	17
Gifts and Memorials	18
JCC News	19
Yahrzeits	20
Chanukah Prayers for the Home	21
Advertisers	22
Calendar	23

DECEMBER TEMPLE OFFICE HOURS

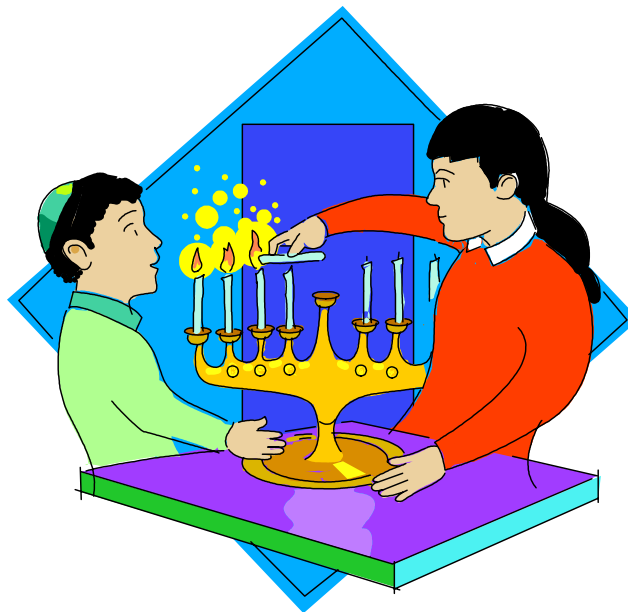
Monday – Thursday: 10:00 AM – 3:00 PM

Friday: 10:00 AM – 1:00 PM

Temple Administrator: *Dawna E. Wade*

Rabbi's Office Hours for December

While Rabbi Ratner is recuperating, please call the Temple office (253-4911) to speak to Cantor Winston.



ANNUAL MENORAH CONTEST

Friday, December 7th

Make your original Menorah out of any kind of material, as long as it's not flammable.

Be creative! Be original! Be amusing!

Prizes awarded in many categories.



Temple Board & Committee Members

TEMPLE OFFICERS

Gil Kempenich, President	president@bethhatephila.org
Gail Ashley-Smith, 1 st V.P.	firstvp@bethhatephila.org
Charles Erde, 2 nd V.P.	secondvp@bethhatephila.org
Pam Gretz, Secretary	secretary@bethhatephila.org
Laurence Weiss, Treas.	treasurer@bethhatephila.org
Howard Jaslow, Past Pres.	pastpres@bethhatephila.org

BOARD OF TRUSTEES

Debbie Adams	trusteea@bethhatephila.org
Dottie Davis	trusteeb@bethhatephila.org
Preston Diamond	trusteec@bethhatephila.org
Nan Emanuel	trusteed@bethhatephila.org
Rubin Feldstein	trusteee@bethhatephila.org
Elise Israel	trusteef@bethhatephila.org
Chuck Itzkovitz	trusteeg@bethhatephila.org
Sandra Layton	trusteeh@bethhatephila.org
Hilary Paradise	trusteei@bethhatephila.org

Congregational Committees

RITUAL ritual@bethhatephila.org

Charles Erde, Chair

Rabbi Robert J. Ratner	Cantor Debbie Winston
Gail Ashley-Smith	Geri Garfinkel
Shirley Cohen	Lulla Shermis
Dottie Davis	

SECURITY

security@bethhatephila.org

Mark Levine, Chair

Gil Kempenich Bob Winston

FUND RAISING

fundraising@bethhatephila.org

Debbie Adams, Chair

HARDLOX

Debbie Adams Pam Gretz Elise Israel

SOCIAL JUSTICE

socialjustice@bethhatephila.org

Judy Leavitt, Chair

16 additional members

NOMINATING

nominating@bethhatephila.org

Rubin Feldstein	Barbara Jaslow
Sandra Layton	Ilene Procida

ENDOWMENT TRUSTEES

endowment@bethhatephila.org

Kerry Friedman	Bob Janowitz, Ex-Officio
Helaine Greene	Scott Lebensburger

MEMBERSHIP

Hilary Paradise, Chair

Nan Emanuel	membership@bethhatephila.org
Ed Fidelman	Sydelle White
Gail Sobel	Ted Zoller

FINANCE

Laurence Weiss, Chair

Ed Fidelman	finance@bethhatephila.org
Kerry Friedman	Joe Karpen
Charles Gershon	Scott Lebensburger
Howard Jaslow	Leon Rocamora

TZEDAKAH

Ann Feldstein, Chair

Rubin Feldstein	tzedakah@bethhatephila.org
Pam Gretz	Linda Kavanaugh
Chuck Itzkovitz	Barbara Stein
	Sherrill Zoller

BROTHERHOOD

Arnie Sgan, President

Bob Winston, Vice President

brotherhood@bethhatephila.org

SISTERHOOD

Gloria Pincu & Sherrill Zoller, Co-Presidents

sisterhood@bethhatephila.org

SISTERHOOD GIFT SHOP

giftshop@bethhatephila.org

RELIGIOUS SCHOOL

Dottie Davis	religiousschool@bethhatephila.org
Claire Dubin	Karen Hyman
	Amanda Diamond Ring

OUTREACH

Nan Emanuel, Chair

outreach@bethhatephila.org

LONG RANGE PLANNING

CBHT Campus Development

	<i>Helaine Greene, Chair</i>
	longrange@bethhatephila.org

CEMETERY

Hyman Dave, Chair

Natalie Nachman	cemetery@bethhatephila.org
	Buddy Rosenberg

HOUSE

Bob Winston, Chair

	house@bethhatephila.org
	Ty Erickson

LANDSCAPING

Gail Ashley-Smith, Chair

	landscaping@bethhatephila.org
	Sandra Layton

SACRED AGING

Arlene and Bernie Farrow, Co-Chairs

sacredaging@bethhatephila.org

Menorah Editor: Barbara Jaslow — menorah@bethhatephila.org



President's Message

We will LISTEN!

We are about to embark on a very challenging mission. With Rabbi Ratner's impending retirement, we must begin the search process — I can't say "to replace our Rabbi," as Rabbi Ratner is not replaceable. What Rabbi Ratner has given in energy, in erudition, in building bridges, in building our congregation, in sharing his wisdom, in helping us understand ourselves as Jews and our responsibilities as Jews... and so much more — 16 years of absolute devotion, hard work, and passion for his work — that's not something you just "replace."

The mission is particularly challenging precisely because Rabbi Ratner is irreplaceable. But with unity of purpose and great care I know that we will meet the challenge. I clearly remember in particular one of Rabbi Ratner's sermons – the focus was to LISTEN! Try hard to understand! Don't jump to conclusions! THINK! Oh, does that ever make sense now!

We have assembled a carefully chosen search team that reflects a cross-section of the various constituencies of our congregation. Its members are: Shirley Berdie, Shirley Cohen, Nan Emanuel, Charles Erde, Ed Fidelman, Geri Garfinkel, Charles Gershon, Evan Gilreath, Karen Hyman, Howard Jaslow, Sarah Karpen, Gil Kempenich, Judy Leavitt, Jenny Mercer, Karen Paly and Bob Winston.

We have also identified a core of people whose advice and counsel we may seek during our deliberations because of special knowledge, experience and insights. And we are receiving significant input from you to help in our quest.

There is a window of opportunity right now that enables us to make our needs and desires known to URJ Rabbis and to begin to assess candidates. We pledge to keep you informed and involved.

Unity of purpose is particularly important right now. We must set aside personal bias and do what is in the best interest of our congregation and community. I am very confident that the unity we have shown during these difficult months will continue and will result in a very satisfying, positive outcome.

Shalom,

Gil Kempenich



CONGREGATION BETH HATEPHILA'S VISION STATEMENT

*Adhering to the ideals of Reform Judaism,
become the Southeast's preeminent midsize congregation
for the learning of Jewish traditions, history and Torah
in a spiritual environment that encourages open-mindedness,
a sense of belonging and Tikkun Olam.*



Chai Notes

From the Cantor's Office

The days are getting much shorter, and the darkness of evening settles in quickly. What a great time to "nest," or stay at home and get some good reading, cooking and visiting done. This year, instead of shopping for yet another mysterious gift for your loved ones, consider a gift card to "Books a Million" or "Barnes and Noble," or better yet, go online at Amazon.com and find them one of the newest Jewish fiction or non-fiction books. After all, when we can't grow things outside and nurture them, we can still grow things inside –our brains!

I again would like to thank all of you for your constant love and support during this difficult time of transition. I know full well that we have only begun to explore our feelings of loss over Rabbi Ratner's retirement. The entire congregation should be very proud that others in the Jewish community have commented already on our calm and steady demeanor. Please don't hesitate to call if you need to talk, or just want to share a cup of tea. Here are some things I would like you to take note of:

1) **Sunday afternoon, December 2nd, 4 PM:** Another incredible program from the **Sacred Aging Committee!** *Dr. Bob Pozner* will present a PowerPoint program on "Dizziness, Falls and Fractures." Don't miss this!! Free and open to the public, refreshments always served, donations greatly appreciated. Unger Hall is the place to be.

2) **Friday evening December 7th: Our Hanukah service at 6:30 PM.** It's time for our **annual Menorah contest!!!!** Make your original Menorah out of anything you can think of, as long as it's not flammable. Prizes will be awarded in many categories, and I have already hidden them somewhere in my office! (Don't you dare look.)

3) **Saturday evening, December 8th:** We will have Havdallah at **6:30 PM** and then an evening of sharing, laughing and tears, as we share as a group our stories of Rabbi Ratner. If you have pictures, poems or mementos to bring, please have them with you to share. Sweets, coffee and tea will be served. No RSVP needed. Music by Cantor Deb. Meet in Unger Hall.

4) **Sunday midday, December 9th at 12:15 PM:** Confirmation class will meet to view a movie in Unger Hall. Pizza will be served, and a treat from Cantor Deb!

5) **Sunday December 16th 4 PM at the JCC:** **Asheville's Jewish Family Service Kick-off featuring the CBHT Congregational Choir!!**

Come and cheer on our choir as they serve as the featured entertainment, accompanied by Dr. Vance Reese. See and hear what the new Jewish Family Service is all about, and what it can do for your family!!

AS YOU CAN SEE, THERE'S LOTS OF GREAT STUFF GOING ON. GET INVOLVED. CALL AND TELL ME THAT YOU'LL HELP!

**B'shira,
Cantor Deb**





HEBREW CLASSES OFFERED BY JENNY MERCER

Intermediate Hebrew – Read and translate prayer book and Torah Hebrew by learning basic grammar. 22 classes! Thurs., 5:30 – 7:00 PM, Nov. 29th – May 8th. Textbook available in the Temple office. Students must be proficient Hebrew readers. Cost: \$130 for members, \$170 for non-members.

Advanced Biblical Hebrew – Read and translate selections from the Bible. More advanced grammar will be introduced. 20 classes. Thursdays, 7:00 – 8:30 PM, Sept 20th - May 1st. Textbooks available in the Temple office. Intermediate Hebrew is a prerequisite for this class. Cost: \$120 for members, \$150 for non-members.

All classes are held in the religious school building. Call **Jenny** at 254-2448 with any questions about these classes.



Friendship Circle

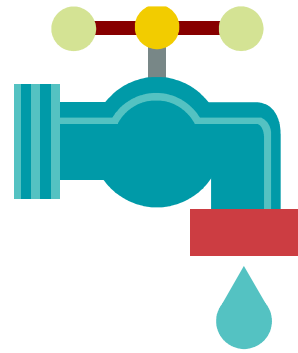
Saturday, December 15th at 10 AM

At our November 10th meeting, Friendship Circle members discussed the importance of Hebrew Schools and Jewish Day Schools. Since many of our members had less than fond memories of Hebrew School, and Beth HaTephila's Religious School seems to be much more successful than those we had attended, we decided it would be good to continue that part of our discussion with a representative of our Religious School.

Our next meeting will be December 15th. We will, as usual, start before 10 AM with half an hour or so of good food and pleasant schmoozing, followed by a short service, and then about an hour of interesting discussion about things Jewish. This time the topics will include our Religious School, the effect on kids of trips to Israel, and why Reform Jews don't "be fruitful and multiply."

Do join us for a stimulating morning.

If you have any questions, please contact **Mark Boyd** at boyd@unca.edu or 253-0119.



Environmental Tip-of-the-Month

“But let justice well up as waters, and righteousness as a mighty stream.” Amos 5:24

Three Easy Steps

We can all take to conserve water... a precious resource!

- ✓ Do a walk-through of your home and look for and repair leaky faucets and toilets, which can waste gallons of water each day.
- ✓ Install low-flow showerheads and spigots in your showers and sinks to significantly reduce home water consumption.
- ✓ Water your lawn and plants only when they need it, and do it in the morning or evening when water is less likely to evaporate.



Yiddish Expressions of the Month

Der emes shtarbt nit ober er leybt vee an oreman.

The truth doesn't die but it lives like a pauper.

Got helft dem oreman; er farhit im fun tayereh avayres.

God helps the poor man: he protects him from committing expensive sins.



Sisterhood News



Brotherhood News



We hope you all have had a wonderful Thanksgiving Day and are enjoying a Happy and Healthy Chanukah!!

Although we had planned a program in November and one in December, we did not get a timely response; therefore, *Lana Waltzer*, our Program Chair, will be rescheduling them.

Our new kitchen freezer came just in time — the morning of our Canter Winston's Celebration!! This was a great tribute to a great person.

The onegs for 2007 have been filled, and we look forward to filling the 2008 onegs. Please call *Sally Cohn* @299-7100 if you need an oneg date.

We are hoping for donations for our continuing bathroom renovations.

If you are a member of Sisterhood, you will receive a 20% discount at the Gift Shop, so send in your dues.

Mark your calendars for our Second Progressive Dinner to be held on **May 18, 2008**.

We send our best wishes to Rabbi Ratner and his family at this difficult time.

Gloria Pincu and Sherrill Zoller,
Co-Presidents

Brotherhood participated in the Mitzvah Mall by preparing and selling sandwiches and hot dogs. Along with baked goods sales from the Tzedakah Committee, we raised enough money to donate nineteen mosquito nets to the Darfur Refugee Camps. In our congregation, the URJ Nets Project is a combined effort of Brotherhood and the Tzedakah and Social Justice Committees. *Mort and Barbara Stein, Charles Erde, Rubin and Ann Feldstein, Arnie Sgan, Linda Kavanaugh, and Sherrill Zoller* helped with preparation and sales. As usual *Edward Wiley* and *Ellen Gilreath* were extremely helpful.

Next Brotherhood Brunch is scheduled for **Sunday January 11th**. Look for news of the program soon.

Arnie Sgan,
President



THE GIFT OF LIFE

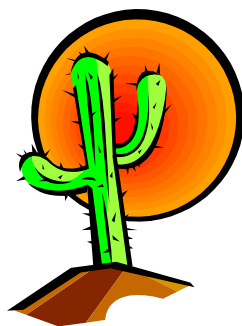
On **Sunday, January 20, 2008**, beginning at 9:30 AM, Temple Beth HaTephila will hold its **THIRD ANNUAL BLOOD DRIVE!** Each year since its inception, our congregants have consistently increased donor percentage goals. Last year, we reached 100% of our goal. This year, with higher goals, I know that we can again achieve 100%. Brotherhood and Sisterhood are jointly sponsoring this great mitzvah event. Giving the gift of life through blood donation is a mitzvah of the highest order.

You do not actually have to give blood to participate in this great mitzvah. We need volunteers to greet donors and work in the canteen area providing snacks to donors after they have given blood. The shifts for greeters and canteen workers will each be 1 ½ to 2 hours in duration. Two volunteers are needed for each shift (2 greeters and 2 canteens workers).

I urge all who can to join in our Blood Drive. Please contact me for further details or to be one of the first to sign up.

Linda Kavanaugh — e-mail: bubladdie@aol.com — phone: 828-683-6289

Tzedakah Committee News



SHELTER SERVING

Lunch served on November 16, 2007 at ABCCM Men's Shelter was a very, very tasty Southwest flavored chicken served over linguini. Accompanying the chicken dish, we served tangy cranberry/applesauce salad.

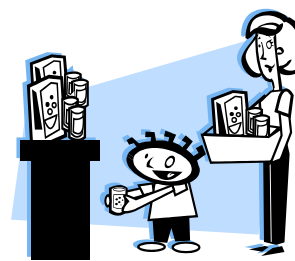
Thanks, again, to those "wonderful Westle women" (*Jackie and her daughters Amanda and Lacy*) for baking another wonderful dessert.

Meal preparation was done by *Barb Stein*. Thanks, Barb. *Neal Goldberg, Eric Naimark and Allen Sher* served the meal. Kudos to these fine gentlemen, "shelter serving regulars" who can always be counted on to lend a hand. Thank you, Allen, Neal and Eric.

WHERE ARE THE COOKS???

If you want to participate in this mitzvah, please let me know

Linda Kavanaugh
bubladdie@aol.com
683-6289



MANY MITZVAHS

Over 40 people came to CBHT's Mitzvah Mall on November 11th, organized by the Tzedakah Committee, to meet representatives of the Center for Diversity Education, Habitat for Humanity, Manna Food Bank, Literacy Education, Jewish Family Service, Guardian Ad Litem, Foster Parents Association, Wild South, Project Linus, and Helpmate to find out about volunteer opportunities and make contributions. Our Brotherhood prepared and sold lunches, absorbing the cost of ingredients, so that all proceeds could be donated to the Nothing But Nets fund drive. Thanks to *Arnie Sgan, Rubin Feldstein* and *Mort Stein* for preparing and serving the lunch and to *Barbara Stein, Pam Gretz* and *Ann Feldstein* for providing baked goods.

Thank you also to our talented musicians *Paul and Xandy Chelms* and *Sara and Charlie Van Buskirk* who provided wonderful entertainment for people to enjoy. Thanks also to *Gail Sobel* for printing the gift cards and signs and *Ellen Chelms* for the lovely tzedakah boxes she made for each organization.



Christmas Mitzvah Day 2007!

About 40 volunteers have signed up (there's room for more!), and the agencies we served in the past have been grateful to hear from us. Our thanks to the volunteer participants who updated their contact info and made some suggestions. If you're interested but haven't signed up, please contact *Jerry Plotkin* by e-mail (geraldplotkin@hotmail.com) or by phone (650-2723). Any special circumstances (staying seated, serving but not cooking, for instance) are taken into consideration.

Social Justice Committee

NER SHEL TZEDAKAH

הקדצ לש רנ

CONFRONTING POVERTY

- More than 1 in 10 American families live in poverty
- 1 in 20 Jewish households lives in poverty
- 1 in 5 Jewish households are low-income, earning less than \$25,000 per year.*

On Chanukah we light candles and perform *mitzvot*. This year, the Social Justice committee in conjunction with an initiative of the Union for Reform Judaism, the Jewish Council for Public Affairs and United Synagogue of Conservative Judaism, has created "*Ner Shel Tzedakah*" – an interdenominational program to raise public awareness and educate the Jewish community about poverty during the Chanukah season.

Our tradition demands that we reach out to the poor and needy in our midst. In the words of the prophet Isaiah, "Share your bread with the hungry, and take the wretched poor into your home. When you see the naked, clothe them, and do not ignore your own kin." (Is. 58:7) As part of an initiative to address the growing problem of poverty in general, *Ner Shel Tzedakah* is planned for the 6th night of Chanukah, **Sunday, December 9th, 2007.**

On this night, we encourage families to teach their children about the needs of those less fortunate and donate the value of the gifts they would ordinarily exchange (or the gifts themselves) to local or national organizations assisting the poor. The process of deciding where and how to fulfill this mitzvah can itself be a fun and engaging family project.

One option is to give \$10/ family or per person to the **Nothing But Nets** project to *prevent the spread of malaria*. Studies show that using insecticide-treated bed nets can reduce transmission as much as 50%. A \$10 donation goes directly towards the purchase, distribution, and education about the proper use of a family bed net. The Union for Reform Judaism (URJ) has endorsed the United Nation's Millennium Development Goals and joined in the campaign to reverse global poverty. Linking with other efforts to aid the victims of the genocide in Darfur, contributions raised will provide bed nets to Darfuri refugees who have crossed borders into the Central African Republic and Chad. Please send your check to the Temple, c/o Tzedakah committee so we can send all our contributions, as a congregation, and show we are making a difference.

* U.S. Census Bureau report (September 2004)

Judy Leavitt



Ner Shel Tzedakah Blessing

A Blessing to recite on the 6th night of Chanukah

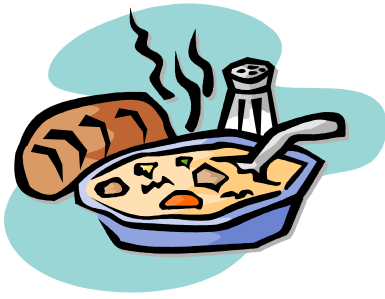
בְּרוּךְ אַתָּה יְהוָה אֱלֹהֵינוּ מֶלֶךְ הָעוֹלָם אֲשֶׁר קִדְּשָׁנוּ
בְּמִצְוֹתָיו וְלַמַּדִּינָה לְהַדְלִיק נֵר שֶׁל צְדָקָה.

Baruch Ata Adonai, Eloheinu Melech Haolam, Asher Kidshanu B'mitzvotav, V'lamdeinu L'Hadlik Ner Shel Tzedakah.

Blessed are You, Eternal, our God, who makes us holy through the performance of Mitzvot, and inspires us to light the Candle of Righteousness.

As we light this "Ner Shel Tzedakah" tonight, we pray that its light will shine into the dark corners of our world, bringing relief to those suffering from the indignity and pain that accompany poverty. May our act of giving inspire others to join with us in the fight against the scourge of hunger, homelessness, need and want. Together, let us raise our voices to cry out for justice, and may that clarion call burst through the night's silence and declare that change must come.

Temple Happenings



DECEMBER SHABBAT SEDER

December 14th at 6:00 PM

This month's covered dish/potluck Shabbat seder will be held on December 14th at 6:00 PM. The theme is **COMFORT FOODS**, so please think about what main dishes, salads/side dishes, and desserts represent that for you.

The cost is \$4 for adults and children over 6 (payable in advance, please), with children five and under invited at no charge.

Please call the Temple office at 253-4911 to let us know which of your favorite comfort foods you will bring to share (enough for six to eight people, please) and to make your reservations. The deadline is Wednesday, December 12th at 5:00 PM. We look forward to seeing you there!

**Roses are Red
Violets are Blue
CBHT Sweetheart Dance
Really needs YOU!!
2/9/08**



December Onegs

- Dec. 7 Barbara Whitaker.
- 14 Shabbat Seder
- 21 Claire & Jack Orenzow in honor of their 63rd Anniversary
- 28 Ellen Shaw and Jennifer Jenkins



TOT SHABBAT

December 21st @ 6:30 – 7:00 PM

Children from birth to five years old (and their parents) are invited to share in Sabbath songs, stories and fun.



2007 — 2008 CBHT Directory Hot off the Press

Hopefully each member unit has received their bright yellow directory in the mail. If you did not, you can get one from the office.

Thanks to our advertisers and *Dawna E. Wade*, our administrator, for their support and assistance in making the directory possible.

Updates — please call or email our administrator if your name, phone number, email or address changes. Also please notify her at the birth of a child. All this helps to keep our database correct and current.

HOLIDAY OFFICE CLOSURE NOTICE

The Temple office will be closed on both December 25th and December 31st. Also, while Dawna is recuperating from her surgery, the Temple office will be open for abbreviated hours. Please call before you stop by to ensure someone is there.

Please remember that there will be no religious school or adult education on December 23rd or 30th.

More Temple Happenings



OFFICE HOURS & COVERAGE THROUGH DECEMBER

During Dawna's absence, the Temple office is scheduled to be open Monday through Thursday from **10:00 AM to 3:00 PM**, and Friday from **10:00 AM to 1:00 PM**.

Lea will be back for part of that time (Thank you, Lea!) and Nan Emanuel has done a terrific job filling the other slots.

However, it would be wise to call before stopping by to ensure someone is in the office to assist you.

Thank you for your patience during this time. Dawna is expected to return to work on January 2nd, when the office hours should get back to normal.



GIFT SHOP NEWS PRE-CHANUKAH GIFT SHOP HOURS

Time is running out to finish your Chanukah shopping.

The Sisterhood Gift Shop is open the following hours in December to help you find the perfect gift:

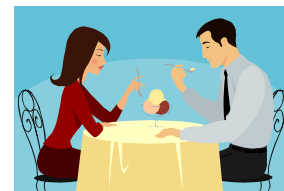
December 2 nd	9:30 a.m. to 12:00 noon
December 3 rd	3:30 p.m. to 5:00 p.m.
December 4 th	9:00 a.m. to 12:00 noon

And remember, Sisterhood members may show their 2007-2008 membership card to receive a 20% discount.



A REMINDER ABOUT FOOD CARDS

Some of you might not know this, but there is a totally painless way to help us make some shekels when you buy groceries (or even gas and prescriptions at Ingles). We have food cards for sale at the office from **Ingles, Earthfare, Fresh Market** and **Greenlife** that are available in all sorts of denominations. They work just like gift cards – you simply run them through the card readers in the store and the balance is deducted from the card. When it is used up, simply come and buy another card(s). We get the cards at a discount and the profits really help us make ends meet. One thing to note though — please consider purchasing these with cash or checks. Using your credit card eats up around half of the profit we can make. To get your cards, simply check with **Lea** (who is filling in for Dawna) at the office. Thank you!

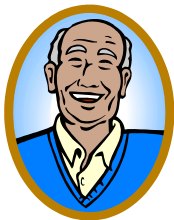


INTERNATIONAL DINING CLUB BOOKS

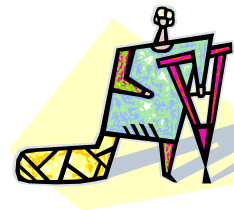
International Dining Club Books are available for \$38. These books include “two for one” coupons for a variety of restaurants, theaters, etc., in the Asheville area, and are good for one year from the date of order. This is a great way for you to support the Temple and to have a great (and less expensive) time, too!

And don't forget, Chanukah is early this year. The dining club books make great gifts.

Call the Temple office at 253-4911 to order your book(s).



SACRED AGING COMMITTEE



Chavurot Afternoon A Great Success!!

A "Chavurot Afternoon," presented by the Sacred Aging committee, on November 4th, was a resounding success. There were 40 applications from congregants ages 31 to 95! Our new Chavurot were formed that afternoon, and a fifth Chavurah is in the process of formation, with applications still coming in.

Attendees met with the members of their Chavurot, got to know a bit about one another, and planned their first meetings or events. They enjoyed a nosh as they shared their backgrounds and interests. Lots of laughs and much buzz could be heard coming from each Chavurah. For many it was a way to connect to a "family of friends" within our congregation. For some it was a way to expand their connections within the CHBT congregation. These Chavurot will meet for social and educational events and will enjoy the closeness of their new "families."

Applications from congregants to join a Chavurah will be accepted at anytime, on an ongoing basis, and the formation of new Chavurot will continue to be a source of social connections for new CHBT members and established congregants. Application forms are available at the temple office. If you would like one, please contact Dawna Wade at admin@bethhatephila.org, or, stop by the office where you may pick up an application.

A Chavurah is not a religious sub-group. It is, rather, a way for CHBT members to become part of a social group; a "family of friends."

For information, contact **Arlene and Bernie Farrow** at sacredaging@bethhatephila.org, or call 658-3161.

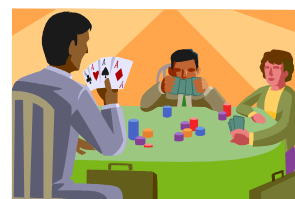


"FALLS IN THE AGING": A PRESENTATION BY DR. BOB POZNER

Sunday, December 2nd, 4 PM

"Falls in the Aging," an in-depth PowerPoint presentation by *Dr. Bob Pozner*, will take place on December 2nd at 4 PM at Beth HaTephila. This program will enlighten us as to what changes occur in our bones as we grow older, and why our bones are more likely to fracture or break. We will also learn what we can do to prevent bone deterioration. Much can be learned from this presentation, no matter what age we are. This is a "must attend" presentation. There is no charge. Guests are welcome from the general community. Refreshments will be served. Donations are greatly appreciated.

For further information, call 253-4911.



AN AFTERNOON OF FUN AND GAMES

The fifth Sacred Aging Committee presentation, "An Afternoon Of Games" on **Sunday, January 6th, at 1 PM**, in Unger Hall, will be hosted by **Shirley Cohen**, CHBT's dynamic, energetic, fun congregant and thespian!!

Bring your games: Cards, Mah Jong, Board Games, and more. This will be an afternoon of fun and games you won't want to miss. Come and play, schmooze and nosh. You may be able to put together an ongoing group that likes to play a game that interests you.

So, put on your game face and come ready for fun. No charge. Refreshments served. If you would like to bring a nosh to share, contact *Dionne Kempenich*.

For information call **Arlene and Bernie Farrow** at 828-658-3161.

HardLox 2007



Hardlox Bakery Tables

I offer a huge thanks to all the following for cooking and baking with me for HardLox.

Debbie Adams	Dionne Kempenich
Gail Ashley-Smith	Natalie Plotkin
Nikki Benatan	Sherry Plotkin
Shirley Berdie	Zachery Plotkin
Debra Cooper	Pat Reader
Dottie Davis	Rusty Schapiro
Ivy Dykman	Eleanor Schockett
Ann Feldstein	Dena Sklaroff
Taryn Goodman	Gail Sobel
Pam Gretz	Barbara Stein
Pam Hecht	Barbara Stickle
Jackie Itzkovitz	Nancy Trager
Jan Joseph	

I would also like to thank all the women that baked at home. The sweets were beautiful and looked so nice on the plates. All the home made baked goods sold, as well as all the baked goods that were done with Ron.

I thank each person for their help and thanks to all the women that made so many phone calls for me. Without all your help, the baked goods booth at Hard Lox could not have been so successful. Thank you, thank you, and thank you.

Nicky Erickson

Laurie Johnson took many more pictures of HardLox which are available for browsing and/or purchase on her website:
<http://ashevillepix.smugmug.com/gallery/3693199#211448408>



HardLox Israeli Folk Dancing

I want to give a hearty thank you to all the Hard Lox Israeli Folk dancers! We had such fun sharing our dances with all of you. Thank you to Charlie Van Buskirk for setting up the stage and sound system. Thank you to Cantor Winston for organizing the performance schedule. Thank you to all our audience and participants who joined us in dancing.

Thank you so much to the following dancers for joining me: Pauline Berman, Ruth Christie, Audrey Dimenna, Meryl Goldstein, Cathy Kayne, Jenny Mercer, Barbara Wallk.

Susan Ratner



Working at the popular kugel & blintzes booth is Larry Rosenberg. The kugel makers were led by **Karen Hyman** and included **Robin Sholder, Karen and Brooke Paly, and Judy Miller**. The blintzes came from Café on the Square.

HardLox 2007

Led by the triumvirate of **DEBBIE ADAMS**, **PAM GRETZ**, and **ELISE ISRAEL**, our fifth annual HardLox was a huge success. We sold the most sandwiches ever, we had the largest crowds and we had the warmest weather.

The following are the names of our hardworking volunteers, without whom none of it would have been possible. They gave their time and their energy both before and during the actual day. They attended planning meetings, they shopped and cooked, they worked the booths, sold the tickets, set up the tents, took down the tents, dumped the garbage, schlepped back and forth to the temple, to the store for extra supplies, and generally did what was needed to make the day the success that it was. Many of them did multiple tasks and worked multiple shifts. Our thanks also to anyone we may have inadvertently omitted from this list. Your work was just as appreciated. (The names in **bold** are those people who were part of the planning committee and/or chaired a booth.)

Debbie Adams

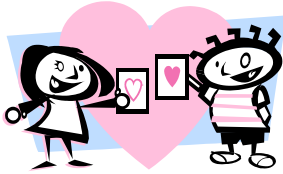
Stacey Adams
Catherine Arons
Gail Ashley-Smith
Jack Benatan
Nicki Benatan
Shirley Berdie
David Berkey
Elliott Black
Mark Boyd
Ron Caldwell
Shirley Cohen
Sally Cohn
Stephanie Cooper
Bob Davis
Dottie Davis
Betty Dickson
Elizabeth Dismukes
Judy Duncan
Zane Duncan
Ivy Dyckman
Martin Dyckman
Nan Emanuel
Amy Erde
Charles Erde
Josh Erde
Rachel Erde
Nicky Erickson
Ty Erickson
Vic Fahrer
Arlene Farrow
Bernie Farrow
Robin Feldman
Sam Feldman
Rubin Feldstein
Ed Fidelman
Tyler Fidelman
Anna Friedman
Kerry Friedman
Merima Friedman
Herb Gallinger
Jayne Gallinger
Geoffrey Gerber

Lori Gerber
Steve Gerber
Charles Gershon
Katie Gershon
Ellen Gilreath
Dorothy Golf
Tyra Goodman
Janet Grant
Roberta Gray
Pam Gretz
Joe Harrison
Pam Hecht
Hillel Students
Mark Hinton
Myra Hinton
Sonja Hruska
Karen Hyman
Noah Hyman
Elise Israel
Chuck Itzkovitz
Jackie Itzkovitz
David Jaben
Isaac Jaben
Mark Jaben
Mary Ann Jaben
Molly Jaben
Barbara Jaslow
Howard Jaslow
Jan Joseph
Tony Joseph
Sheri Kahn
Jodi Kann
Leah Karpen
Sarah Cox Karpen
Dionne Kempenich
Gil Kempenich
Gil Lampner
Larry Layton
Sandra Layton
Judith Leavitt
Barbara Lehrer
Steve Lehrer
Mark Levine

Eric Levy
Harris Livingstain
Jack Lowell
Diane Lurie
Marty Lurie
Maxwell Maillis
Marty Mann
Debby Mart
Mike Meadar
Jenny Mercer
Lotte Meyerson
Judy Miller
Sheila Mofson
Natalie Nachman
Eric Naimark
Claire Newkirk
Jane Novoselsky
Seth Novoselsky
Janet Oppenheimer
Claire Orenzow
Jack Orenzow
Olivia Page-Pollard
Erin Paly
Hilary Paradise
Dan Pincu
Gloria Pincu
Jerry Plotkin
Zee Plotkin
Susan Ratner
Pat Reader
Jean Reese
Jonathan Reese
Donna Rinsler
Steve Rinsler
Elisa Roberts
Erin Roberts
Ethan Rosenberg
Larry Rosenberg
Bill Roskind
Carole Roskind
Antoinette Sanders
Michael Scharf

Eric Scheffer
Ellen Shaw
Allen Sher
Lulla Shermis
Sam Shermis
Jack Sholder
Oliver Sholder
Robin Sholder
Sam Sholder
Bob Shuster
Myrna Shuster
Eileen Simon
Ned Simon
Ruth Slawson
Rachel Slosman
Susan Slosman
Gail Sobel
Nelson Sobel
Barb Stein
Elyse Stein
Mort Stein
Barbara Stickle
Marty Stickle
Pauline Studenberg
Carter Tindall
Michelle Tracz
Nancy Trager
Debbie Ullman
Zane Ullman
Michael Unanue
Dawna Wade
Susan Waldman
Larry Weiss
Leslie White
Sydelle White
Steve Wilde
Edward Wiley
Julienne Winner
Bob Winston
Cantor Deb Winston
Sherrill Zoller
Ted Zoller

Our Temple Family



Dear Friends,

How do I thank you? How do I tell you what my celebration meant to me and the part you all played in it?

If I looked from the bimah as I did Friday night and Saturday morning, and I saw the sea of your enthusiastic and supportive faces. That would have been enough!

Dayenu!

If I listened to the readers and all I heard was words read in strong and comforting voices.

Dayenu!

If I counted the monetary contributions and the drums full of cans for Manna Food bank,

Dayenu!

If I counted the cards and the phone calls, the “hellos” that wished me well,

Dayenu!

If I heard the consoling words about my broken wrist and the death of my dog, Miss America,

Dayenu!

If I could possibly imagine the fantastic, abundant and delicious oneg that my friends made available,

Dayenu!

Thank you my dear friends of Beth HaTephila for helping me make October 19th & 20th a weekend I'll never forget.

Adele Rose



Todah rabah to **Debi Cooper** yet again for her hard work and efforts on the garden in front of the Religious School. Her dedication to the project has really made a difference, and both congregants and visitors have remarked about how nice it looks. Thanks!

Get Well Wishes to:

M.B. Adelson	Ed Kaplan
Christie Banks	Marnie Kaufman
Lawrence Cohen	Florence Lebensburger
Edward Cooper	Daniel Lipman
Gary Cooper	Debbie Newmark Mulford
Elissa Denels	Rabbi Ratner
Mary Ellen Dowdy	Eleanor Schockett
Adam Randal Eastus	Ariel Sharon
Paul Ford	Arden Ben Shmiel
Basil Goldman	Natalie Trottier
Riva Gordon	Dawna Wade
Deborah Griesinger	Walter Weiss
Ethel Gross	Norman Willis
Joel Harris	Andy Wisniewski
Deborah Adelson Johns	Wally Wolf



Condolences to the family and friends of **Henry “Hank” Meyers**.



A big thank you goes to **Nan Emanuel, Donna Rinsler, Dottie Davis, Sherry Plotkin, Cantor Deb**, and all the other volunteers who stepped in to help cater and serve the Thanksgiving Seder when Jack Lowell became ill. They had big shoes to fill – Jack’s done a marvelous job for us in the past – and they did it well. We hope everyone who attended enjoyed this year’s Thanksgiving Seder. And, we’re VERY glad Jack is feeling better!



Rabbi Ratner enjoys hearing your good wishes. If you would like to leave him a phone message, please call 296-1395 between 9 AM and 5 PM only.



Celebrate With Our Temple Families

DECEMBER BIRTHDAYS

- | | |
|-------------------------|--------------------------|
| 1 Bruce Berger | 15 Robert Shuster |
| 1 Hope Cucchi | 16 Alan Cutter |
| 1 Diana Gergel | 16 Linda Pitter |
| 1 Joseph Goldenberg | 17 Gail Ashley-Smith |
| 1 Genevieve Levine | 18 Carson Slosman |
| 2 Rona Wisniewski | 20 Jaron Pearlman |
| 3 Michelle Lee | 20 Robert Winston |
| 4 Irene Braun | 21 Abraham Julius Kaplan |
| 5 Bo Farson | 21 Emily Shaw |
| 6 Wolfe Lanier | 23 Jonathan Reese |
| 8 Monroe (Mick) Naimark | 23 Oliver Sholder |
| 9 Eli Samuels | 23 Wally Wolf |
| 10 Nancy Emanuel | 25 Phyllis Scher |
| 10 Randy Levine | 25 Jenny Mercer |
| 10 Buna Gada Mandell | 26 Jean Hansman |
| 11 Richard Braun | 26 Elinore Levitch |
| 11 Evan Dubin | 27 Merima Friedman |
| 11 Ellen Gilreath | 28 Zoe Dubin |
| 11 Allen Hope | 28 Dena Ratner |
| 11 Tamara Landau | 28 Rachel White |
| 12 Nicki Benatan | 30 Debbie Adams |
| 12 Linda Kavanaugh | 30 Ruth Chicurel |
| 12 Brenda Lebensburger | 30 Sonja Hruska |
| 12 Barbara Whitaker | 30 Rebeccah Ratner |
| 13 Paul Ford | 30 Cheryl Whitt |
| 13 Markus Procida | 31 Veronica Grant |
| 13 Jaeden Vargas | 31 Kay Kuczynski |
| 14 Leah Boris | 31 Jennifer O'Connor |
| 15 Karla Diamond | |

DECEMBER ANNIVERSARIES

- 1 Gerald & Sharon Plotkin
- 1 David & Jill Zimmerman
- 5 Anthony & Jan Joseph
- 10 Seth & Jane Novoselsky
- 12 Larry & Linda Kavanaugh
- 15 Arvin & Ruth Kaufman
- 17 Anthony & Debbie Adams
- 18 Arnold & Karen Mandell
- 22 Richard & Irene Braun
- 23 Jack & Claire Orenzow
- 23 Ned & Eileen Simon
- 24 Wally & Rene Wolf
- 25 Lenny & Danny Bernstein
- 25 Rubin & Ann Feldstein
- 27 Victor & Sharon Fahrer
- 29 Jonathan & Aileen Pearlman
- 30 Martin & Ivy Dyckman
- 31 Bruce & Zoe Berger



Just as you put away your Chanukah items, it will be time to send in your article(s) for the January Menorah.

The deadline is **December 15th**. The email address is: menorah@bethhatephila.org.

Thank you. *Barbara Jaslow*



Gifts and Memorials



The Congregation and its Trustees gratefully acknowledge the following gifts:

RABBI'S DISCRETIONARY FUND

<u>DONATED BY</u>	<u>IN MEMORY OF</u>
Jane & Seth Novoselsky	<i>Paul Novoselsky</i>
Alan Cutter and Family	<i>Edwin Cutter</i>
June, Pat and Anna Grimes	<i>Harry Blomberg</i>
Ginger Lerner	<i>Arlene Sandman</i>
Phyllis Scher	<i>Rae K. Scher</i>
Phyllis Scher	<i>Mildred F. Scher</i>
Jonathan Pearlman	<i>Sidney Fred Pearlman</i>
Gene Winner	<i>Joseph L. Winner</i>
Marvin Nockow	<i>Minnie Nockow</i>
Shirley Cohen	

Child Maltreatment Evaluation Program

Ann & Rubin Feldstein *Pauline Miller*

DONATED BY IN HONOR OF Adele Rose's Bat Mitzvah

Seymour & Lotte Meyerson Lenore G. Senfeld
Dr. Michael & Michele Heller
Sarah L. Dollar and Randy Richards

INTERFAITH FUND

<u>DONATED BY</u>	<u>IN MEMORY OF</u>
Stan & Linda Arnold	<i>Larry Michael Arnold</i>
Lore Schifftan	<i>Herbert Schifftan</i>

KITCHEN FUND

<u>DONATED BY</u>	<u>IN HONOR OF</u>
Melvin Rubenstein as a thank you for the High Holy Day services	

HARDLOX FUND

<u>DONATED BY</u>	<u>IN MEMORY OF</u>
Bob & Dottie Davis	<i>Sam Davis and Lola Simpson</i>
High Touch – High Tech, Inc. BB&T Portfolio Metalwork	
Dorothy Golf	Jay & Penelope Silverman

GENERAL FUND

<u>DONATED BY</u>	<u>IN MEMORY OF</u>
Dr. & Mrs. Leo Finkelstein Jr.	<i>Sylvia Finkelstein</i>
Dr. & Mrs. Leo Finkelstein Jr.	<i>Sam Baer</i>
Gail & Nelson Sobel	<i>Louise Rubin</i>
<u>DONATED BY</u>	<u>IN HONOR OF</u>
Roberta Bograd, Donna Cloninger, Wendy Cohen, Betsy Garfinkle, Carol Leavelle, and Barbara Ziegler in appreciation of <i>Liesel Appel</i>	
Robert & Sharon Michelson	Michael Kasky
Dennis & Peggy Frank	Arthur & Claire Kretchmer

CANTOR'S DISCRETIONARY FUND

<u>DONATED BY</u>	<u>IN MEMORY OF</u>
Phyllis Scher and Jules Resnick	<i>the father/father-in-law of Mr. & Mrs. Stephen Lehrer</i>
Paul & Shirley Ford	<i>Anna Ford</i>
Bernard & Arlene Farrow	<i>Jesse Farrow</i>
Bernard & Arlene Farrow	<i>Jennie Goldstein</i>
<u>DONATED BY</u>	<u>IN HONOR OF</u>
Gail Chassin Shulimson in appreciation of Cantor Deb for her work on the Anne Frank concert	
Eleanor L. Schockett with appreciation to Cantor Winston Adele Rose	

Adele Rose's Bat Mitzvah

Leonard & Helaine Greene Rosemary & Fred Hansen
Seth & Julie Paster Gary & Jill Ladwig Allen Sher
Gail Chassin Shulimson The Deutsch Family Susan Jarrett

MEMORIAL FUND

<u>DONATED BY</u>	<u>IN MEMORY OF</u>
Mary and Jan Schochet	<i>Jennie B. Schochet</i>
Mary and Jan Schochet	<i>Celia Petersiel</i>
Mary and Jan Schochet	<i>Barney Schochet</i>

JOSEPH DAVE CHOIR FUND

<u>DONATED BY</u>	<u>IN MEMORY OF</u>
Hyman Dave	<i>Lillian Dave Schupler, Ann Moss and Sara Rosenblatt</i>
Rosalie D. Schrier	<i>Ethel Dave, Kimberly Barr, and Ann Moss</i>

MUSIC FUND

<u>DONATED BY</u>	<u>IN MEMORY OF</u>
Ivy & Martin Dyckman	<i>Joel Fine, Ruth Dyckman and Pearl Yoffer</i>
Alan Cutter and Family	<i>Edwin Cutter</i>

LANDSCAPING FUND

<u>DONATED BY</u>	<u>IN MEMORY OF</u>
Leonard & Helaine Greene	<i>Stanley Greene</i>
Beatrice Greene	<i>Stanley Greene</i>

MAIMONDES FUND

<u>DONATED BY</u>	<u>IN HONOR OF</u>
Rosalie Schrier for Rabbi Ratner's recovery Leon Rocamora	

LIBRARY FUND

<u>DONATED BY</u>	<u>IN MEMORY OF</u>
Myrna Shuster	<i>Ted Silver</i>
<u>DONATED BY</u>	<u>IN HONOR OF</u>
Bert & Hertha Horwitz in appreciation for Cantor Deb	



More Gifts and Memorials



The Congregation and its Trustees gratefully acknowledge the following gifts:

TZEDAKAH FUND

DONATED BY

Jay Silverman

Irma & Basil Goldman

Chuck & Jackie Itzkovitz

IN MEMORY OF

Dr. Irving Silverman

Benjamin Baletin

*Linda Kavanaugh's mother,
Marian Epstein*

DONATED BY

Chuck & Jackie Itzkovitz

Chuck & Jackie Itzkovitz

Howard & Barbara Jaslow

IN HONOR OF

Adele Rose's Bat Mitzvah

*Get Well Wishes for
Rabbi Ratner*

Adele Rose's Bat Mitzvah

URJ California Disaster Relief Fund

Seymour & Lotte Meyerson

Helen M. Argall

Gil & Dionne Kempenich

Dorothy Golf

Jerry & Sherry Plotkin

Allen A. Sher

Martin & Ivy Dyckman

Howard & Barbara Jaslow

Adele Rose

Nothing But Nets

Allen Sher

Herbert & Jayne Gallinger

Tzedakah Committee

Howard & Barbara Jaslow

Bob & Dottie Davis

Social Justice Committee

Brotherhood

Rubin & Ann Feldstein in memory of *Morris Miller*



Chanukah 2007 at the JCC

Community Chanukah Celebration Thursday, December 6th @ 6:15 PM

Warm up with a cup of hot cider and join the entire community for a Chanukah public celebration and candle lighting with singing, storytelling, performances, and dreidels/gelt for the kids!. Free and open to the public. Call 253-0701 ext. 108 for info.

JCC Annual Chanukah Dinner Sunday, December 9th @ 6 PM

Food, friends and fun! A delicious dinner to celebrate the season of light, with music and dancing by local Klezmer band Chicken Soup. Limited seating, advance payment required. Adults: \$15.00 Members/\$18.00 Community; Children: \$6.00 Members/\$8.00 Community. Call 253-0701 ext. 108 to make your reservation.

JCC Chanukah Candle Lightings

Join our JCC Family for an intimate candle lighting ceremony and sing-a-long each night of Chanukah. Free and open to the public at 5:30 PM each day. Call 253-0701 x108 for info.

Tuesday,	Dec. 4 th
Wednesday,	Dec. 5 th
Friday,	Dec. 7 th
Monday,	Dec. 10 th
Tuesday,	Dec. 11 th





Yahrzeits



The Yahrzeit policy at our Temple is as follows:

- ✧ The Anniversary date can be celebrated either in the English calendar or the Hebrew calendar.
- ✧ A letter to remind you about your upcoming Yahrzeit is sent to you two weeks before the actual date.
- ✧ The name of your loved one is read at the Friday evening service immediately before the date of the Yahrzeit.
- ✧ If your Yahrzeit actually falls on a Friday, it will be read the previous Friday.
- ✧ If, for any reason, changes must be made, please call the Office before the scheduled date of service.
- ✧ Please keep the Temple Office informed of any incorrect dates or new dates you wish to include.
- ✧ It is important to give the Office the complete date (month/day/year) and whether it is the English or Hebrew date.
- ✧ Please take a moment to update the Office now. Thank you.

Dec. 7, 2007

Ann Goldfarb
 Jean Goldman
 Charlotte Kempenich
 Wilma L'Engle
 Tillie Levitt
 David Resnick
 Sara Robinson
 Rose H. Rose

Dec. 14, 2007

Sidney Chanin
 Wilma Erde
 Raphael Goldenberg
 Ethel Segall Itzkovitz
 Mario Kempenich
 Barbara Mayber
 Rebecca Privot
 Samuel Robinson
 Harley Schapiro
 Anna D. Silverman
 Miriam Sirkin
 John Slawson
 Ethel Solomon
 Bernard Till

Dec. 21, 2007

Howard Caplan
 Rose Chanin
 Alfred Diamond
 Sylvia Loeserman Diamond
 Harold L. Fisher
 Esther Goldenberg
 Richard Gordon
 Nathan Heller
 Ruth Janowitz
 Harry Kaplan
 Jennie S. Kroman
 Florence Langberg
 Bernard Naimark
 Nathan Peterseil
 Samuel Squire

Dec. 28, 2007

Joseph Galumbeck
 Abraham Garfinkel
 Herbert J. Goldsmith
 William Heller
 Jose Hong
 Ellen Kempenich
 Harry Samuel Kolman
 Olga Manket
 Linda Novoselsky
 Barney Pearlman
 John Simpson
 Winifred Wilson



Contact	E-Mail	Telephone
Dawna Wade , Temple Administrator M-Th: 9:00 AM – 4:00 PM Friday: 9:00 AM – 1:00 PM	admin@bethhatephila.org	253-4911
Gil Kempenich , Temple President	president@bethhatephila.org	665-1125
Cantor Debbie Winston	cantor@bethhatephila.org	253-4911
In case of an emergency after regular office hours, contact Gil Kempenich, President, at 665-1125		



Your Friends in the Mountains!™

GAIL ASHLEY-SMITH

Broker/REALTOR/ABR
ACCREDITED BUYER REPRESENTATIVE

Fax
(828) 683-0399

(828) 683-9969

Cell
(828) 301-6002

ashleyfinchrealty@bellsouth.net



Elise Israel

BROKER ASSOCIATE

OFFICE (828) 350-1005
FAX (828) 253-2206
CELL (828) 230-2943

www.bearcreekrpm.com



e-mail: israel@ioa.com

cell (828) 230-2943

Robert S. Pozner, M.D.
Internal Medicine-Board Certified
Suite 305; 445 Biltmore Center
Asheville, NC 28801

(828) 253-1482

Centrally located near the hospital with free parking.
New patients welcome.

Accepts Medicare (participating) as well as participating for many private insurances (Aetna, Blue Cross\Blue Shield, Cigna, Crescent, HCS, Medcost and United Health Care). Also happy to see Private Pay or work with other insurances.

Timely appointments available.



May G-d bless America and Israel

and

you and yours

**with security, peace, prosperity
and health.**

From the Jewish Conservative Alliance

www.jewishconservativealliance.org

HOME TECH SERVICES, LLC

Your Projects Done Right The First Time

Bob Winston

828-687-3660 (Office)
828-280-3800 (Mobile)



ABR Certified ECO Agent

Keller Williams Realty Serving Western NC

Joe Derfel

Broker

Your Satisfaction is the Measure of My Success

Cell (828) 699-4514; Office (828) 290-1012;

Fax (828) 290-1010;

E-mail – joederfel@bellsouth.net

**PLEASE SUPPORT
OUR ADVERTISERS**

December 2007

Sunday	Monday	Tuesday	Wednesday	Thursday	Friday	Saturday
Happy Hanukkah from Congregation Beth HaTephila 828-253-4911						1
2 9:30 AM Religious School 9:40 AM Adult Education 4:00 PM Falls in the Aging presentation by Dr. Bob Pozner - Unger Hall	3	4	5 7:00 PM Cong. Choir Hanukkah	6 2:30 PM Sisterhood Board meeting 5:30 PM Adult Informed Biblical Hebrew 7:00 PM Adult Adv Biblical Hebrew 7:00 PM Christianity: An In-Depth Look - Unger Hall	7 6:30 PM Family Shabbat Service Sing Hanukkah!	8 10:00 AM Friendship Circle - Unger Hall
9 9:30 AM Religious School 9:40 AM Adult Education Hanukkah dinner at the JCC	10 12:00 PM Social Justice Mtg	11 11:30 AM Tzedakah Mtg 7:00 PM Brotherhood Mtg (at Rel Schl)	12 7:00 PM Cong. Choir	13 5:30 PM Adult Informed Biblical Hebrew 7:00 PM Adult Adv Biblical Hebrew 7:00 PM Christianity: An In-Depth Look - Unger Hall	14 6:00 PM Shabbat Seder 7:30 PM Kabbalat Shabbat Service	15 Menorah Deadline
16 9:30 AM Religious School 9:40 AM Adult Education Sing JCC Concert!	17	18 7:30 PM Board Meeting	19 Fast of Tevet No Cong. Choir	20 5:30 PM Adult Informed Biblical Hebrew 7:00 PM Adult Adv Biblical Hebrew 7:00 PM Christianity: An In-Depth Look - Unger Hall	21 6:30 PM Tot Shabbat 7:30 PM Kabbalat Shabbat Service	22
23 No Adult Education No Religious School	24	25 Christmas <div style="border: 1px solid black; padding: 2px; display: inline-block;">OFFICE CLOSED</div>	26 No Cong. Choir	27 5:30 PM Adult Informed Biblical Hebrew 7:00 PM Adult Adv Biblical Hebrew 7:00 PM Christianity: An In-Depth Look - Unger Hall	28 7:30 PM Kabbalat Shabbat Service	29
30 No Adult Education No Religious School	31 New Year's Eve <div style="border: 1px solid black; padding: 2px; display: inline-block;">OFFICE CLOSED</div>	THE OFFICE WILL BE CLOSED ON THE 25th AND THE 31st				

CONGREGATION BETH HATEPHILA
43 NORTH LIBERTY STREET
ASHEVILLE, NC 28801-1822
(828) 253-4911

Non-Profit Org.
U.S. Postage
PAID
Asheville, NC
Permit # 78

ROBERT J. RATNER, PH.D. RABBI
GIL KEMPENICH, PRESIDENT

**Happy
Hanukkah**

**Food Cards make great holiday gifts for your child's teacher, babysitter,
your dog walker, your hairdresser and your best friend.**

Good for Earth Fare, Fresh Market, Greenlife, & Ingles.

December Dates to Note

Dec. 2 nd	"Falls in the Aging": Dr. Bob Pozner	Dec. 15 th	Friendship Circle
Dec. 6 th	Sisterhood Business Meeting	Dec. 15 th	<i>Menorah</i> Deadline
Dec. 7 th	Chanukah Menorah Contest	Dec. 21 st	Tot Shabbat
Dec. 9 th	Sharing stories of Rabbi Ratner	Dec. 25 th	Christmas Mitzvah Day
Dec. 14 th	Shabbat Potluck Seder		