



The Menorah



Congregation Beth HaTephila: a Reform Congregation in the heart of the Blue Ridge Mountains, Founded 1891

July – August 2007

Vol. 67 No. 11 (Published monthly)

Tammuz – Av – Elul 5767

Congregation Beth HaTephila

43 North Liberty Street

(828) 253-4911

FAX: (828) 253-1553

e-mail: admin@bethhatephila.org

Web site: bethhatephila.org

Rabbi Robert J. Ratner, Ph.D.

Cantor Debra Winston

Gil Kempenich, President

SERVICES

Fridays – 7:30 P.M.

What's Inside

Board & Committee Members	2
President's Message	3
Chai Notes	4
Adult Education	5
Sisterhood News	6
Brotherhood News	6
Tzedakah Committee	7
Temple Happenings	8
More Temple Happenings	9
Sacred Aging Committee	10
Our Temple Family	11
Celebrations	12
Gifts and Memorials	14
Yahrzeits	15
Religious School Registration Form	17
Upcoming Events	19
Calendars	21
Advertisers	23

Temple Office Hours

Monday – Thursday: 9:00 AM – 4:00 PM

Friday: 9:00 AM – 1:00 PM

Temple Administrator: *Dawna Wade*

Rabbi's Office Hours for July & August

While Rabbi Ratner is recuperating please call the Temple office (253-4911) to speak to Cantor Winston.

From the Rabbi's Study

I want to pause and express gratitude to three special people. The first two are **Howard Jaslow** and **Lea Schultz**. They share something in common: they are both retiring their positions, Howard Jaslow from the presidency of Congregation Beth HaTephila and Lea Schultz from the administratorship of our congregation. Both have made substantial contributions to our organization which will have a lasting impact on this organization for a long time to come.

Howard Jaslow has served our Congregation with the highest distinction these past two years. Howard has made it his business to put our house in order by studying nearly every aspect of our congregation and organizing what we do so it is human and efficient, too. Howard is always looking for "action items." Ideas without action are useless – in Howard's hand, ideas, good ideas, become reality. Procedures of a variety of kinds are now in place in our congregation. The essential rework of the bylaws that we have now put into effect represents a collaborative effort with *Gil Kempenich* to make the rules of our governance more coherent and functional. But, more than this, Howard's gentle manner and calm patience have kept our congregation functioning peacefully and effectively throughout his tenure. We have been truly blessed to have Howard Jaslow working on our behalf these two years.

I also want to thank *Barbara Jaslow* for encouraging Howard to work hard and diligently at his presidential duties. Barbara has made a tremendous difference in the life of this congregation, too – to wit, her month in and month out work on editing our Menorah, our principal organ of communication. Thank you, Barbara!

Lea Schultz has served our congregation as Administrator for the past five years. Since we had not had an administrator before, she has literally defined the role for us. Lea has completely transformed the way we do our holy work. Lea has made it possible for Cantor Winston and me to get a lot more of such work done each and every day. She has made us fully responsive to our membership and the community. We are now efficient and thorough in all our work. Lea's troubleshooting abilities are now legendary – she sees issues on the horizon and acts to diffuse them before they become issues. I have been told over and over by our members, as well as by many folks in the community, what a pleasure it is to talk with Lea and to work with her on matters great and small. Many members of our congregation have spent countless hours talking with Lea on the phone or in the office – their lives will be less rich without her to talk to. It is hard to believe she gets everything done. Lea's knowledge of computer software and her selections of just what we needed to manage our congregation's life have been a tremendous boon to us all. Lea, we know we and you have done well in finding a terrific new administrator in *Dawna Wade*. We all want to thank you very much as we send you off to spend precious time in retirement with your sweetheart, Chuck. Thank you, Lea.

Finally, I want to thank *Susan, my wife*. We have been facing monumental challenges and she has been a rock of courage, strength, and hope for me and our whole family. Her love and support, her encouragement and true friendship, her empathy and care all have kept me going. I am so fortunate to have Susan as the love of my life. Thank you, Susan, for everything.

A good summer to all.

Excerpted from Rabbi's report for the Annual Board Meeting, June 2007.

Temple Board & Committee Members

TEMPLE OFFICERS

Gil Kempenich, President	president@bethhatephila.org
Gail Ashley-Smith, 1 st V.P.	firstvp@bethhatephila.org
Charles Erde, 2 nd V.P.	secondvp@bethhatephila.org
Pam Gretz, Secretary	secretary@bethhatephila.org
Laurence Weiss, Treas.	treasurer@bethhatephila.org
Howard Jaslow, Past Pres.	pastpres@bethhatephila.org

BOARD OF TRUSTEES

Debbie Adams	trusteea@bethhatephila.org
Dottie Davis	trusteeb@bethhatephila.org
Preston Diamond	trusteec@bethhatephila.org
Nan Emanuel	trusteed@bethhatephila.org
Rubin Feldstein	trusteee@bethhatephila.org
Elise Israel	trusteef@bethhatephila.org
Chuck Itzkovitz	trusteeg@bethhatephila.org
Sandra Layton	trusteeh@bethhatephila.org
Hilary Paradise	trusteei@bethhatephila.org

Congregational Committees

RITUAL ritual@bethhatephila.org

Charles Erde, Chair

Rabbi Robert J. Ratner	Cantor Debbie Winston
Gail Ashley-Smith	Geri Garfinkel
Shirley Cohen	Lulla Shermis
Dottie Davis	

SECURITY security@bethhatephila.org

Mark Levine, Chair

Gil Kempenich Bob Winston

HARDLOX fundraising@bethhatephila.org

Debbie Adams, Chair

Nicky Erickson Pam Gretz Jackie Itzkovitz
Sandra Layton

SOCIAL JUSTICE socialjustice@bethhatephila.org

Lotte Meyerson, Chair 16 additional members

NOMINATING nominating@bethhatephila.org

Barbara Jaslow Ilene Procida

ENDOWMENT TRUSTEES endowment@bethhatephila.org

Kerry Friedman Bob Janowitz, Ex-Officio
Helaine Greene Scott Lebensburger

MEMBERSHIP

Hilary Paradise, Chair

Ed Fidelman Sydelle White
Gail Sobel Ted Zoller

membership@bethhatephila.org

FINANCE

Laurence Weiss, Chair

Ed Fidelman Joe Karpen
Kerry Friedman Scott Lebensburger
Charles Gershon Leon Rocamora
Howard Jaslow

finance@bethhatephila.org

TZEDAKAH

Ann Feldstein, Chair

Rubin Feldstein Linda Kavanaugh
Pam Gretz Sherrill Zoller
Chuck Itzkovitz

tzedakah@bethhatephila.org

BROTHERHOOD

Arnie Sgan, President

Bob Winston, Vice President

brotherhood@bethhatephila.org

SISTERHOOD

Gloria Pincu & Sherrill Zoller, Co-Presidents

sisterhood@bethhatephila.org

SISTERHOOD GIFT SHOP

giftshop@bethhatephila.org

LONG RANGE PLANNING

CBHT Campus Development

Helaine Greene, Chair

CEMETERY

Hyman Dave, Chair

Natalie Nachman Buddy Riesenberg

cemetery@bethhatephila.org

HOUSE

Bob Winston, Chair

house@bethhatephila.org
Ty Erickson

LANDSCAPING

Gail Ashley-Smith, Chair

landscaping@bethhatephila.org

Menorah Editor: Barbara Jaslow — menorah@bethhatephila.org



President's Message

Of Hugs and Vision

Let's chat a bit. This is my first chance as your president, so let's chat about... hugs.

Years ago Dionne and I were avid square dancers – it was energizing, fun... terrific stuff. We danced in squares – four couples. What I liked best was all the hugging! You hug your partner, then you hug the lady on your left. And when the “tip” is over there is a lot of hugging again. Very nurturing and personal. After a while Dionne had a badge made for me, which I wore for many years. It said “HUG THERAPIST.”

Well, we don't square dance any more, but the hugging stayed with me. Or I stayed with it. So, don't be surprised if you get a warm bear hug from me sometime.

OK, so I'm a hugger. The point is, it's just one of my passions. There are several other things I'm passionate about – one of which is to serve you and Congregation Beth HaTephila as its president.

We are a community of nearly 300 families and singles, around 750 people, every one of us unique, with our own talents, skills and passions. Many of us are here nearly every Shabbat for services, or in Rabbi Ratner's Adult Education classes, or we sing with the adult choir, or we serve on the Temple Board; we participate on Temple committees, in Sisterhood and Brotherhood, we help in the kitchen, we organize special programs, we bring our children to Religious School... we participate, each in our own fashion, and help make Beth HaTephila our community.

We are guided and inspired by Beth HaTephila's Vision Statement – it's on our website and in every issue of the Menorah (see below). A few months ago, Howard Jaslow talked about how we are fulfilling that Vision.

We are a community of tremendous vitality, talent and commitment. There is much that we are accomplishing here. Howard ended his talk with this: “But there is still much to be done.” Howard is right – there is still much to be done. There is still much that can be accomplished. There are still so many ways that our Temple community can be strengthened and enhanced. And that involves us – all of us.

I would like to find ways to channel our individual uniqueness into making Beth HaTephila an ever richer and more fulfilling place – where every one of us can feel, year-around, that we are indeed a vibrant part of the Asheville Jewish community. I'd like our idealized future to become a reality. How? By using the talents, skills and passions each of us already has, through the cultivation and nurturing of a partnership between our leadership, our clergy, our staff and every member.

So I am asking you to do just that: to give of yourself – to share your skills, your talents and what you are passionate about, to help make Beth HaTephila the community that it can be.

Each of us, and certainly all 750 of us, together, can make a BIG difference!

Well, our “chat” so far has been a bit one-sided. I very much look forward to a personal chat with you! Just give me a call or send me an email; we'll figure out a way to get together. Let's share and get to know each other better. Perhaps greet each other with a hug?

Shalom,

Gil Kempenich

CONGREGATION BETH HATEPHILA'S VISION STATEMENT

*Adhering to the ideals of Reform Judaism,
become the Southeast's preeminent midsize congregation
for the learning of Jewish traditions, history and Torah
in a spiritual environment that encourages open-mindedness,
a sense of belonging and Tikkun Olam.*



Chai Notes

Musical Tidbits:

How did Torah chanting come to be?

You might have wondered (I hope you have) why our sacred texts are chanted, instead of read. In addition, you may have wondered why certain melody patterns accompany certain words or phrases.

In fact, our earliest record of Torah chanting comes from around the return from exile in Babylonia, around 530 BCE. There is mention that the people returning from exile had "forgotten" the teachings of their ancestors and of Moses. Ezra the scribe, therefore, read every Monday and Thursday (market days) out loud in the public square, in a manner "which caused the people to understand." We cannot prove that this means that he sang or chanted it, but it is likely. The Babylonia Talmud also mentions using "cantillation" or chanting to aid memory in learning.

The tradition of chanting was probably borrowed from maqamat (chanting symbols in the Arabic manner) or Greek neume (chanting symbols in the Greek manner). Our trope (the symbols in our tradition that tell how to sing the words) were not written down until about 500 CE. Up to that time, the teaching and practicing of the chanting was done with hand signals, called "chironomy," which is still known by a few Cantors today.

The notes we chant are "logogenic," or are driven by the words and images. They are not placed on the words randomly, but are instead used as "tone painting." Certain groups and combinations of notes express certain punctuation, and a melody paints a picture of what the words are showing. For example, "ha-shamayim," the heavens, will have notes that flow upwards, towards heaven. When Abraham raises the knife to kill Isaac, and then starts to slash downward, the melody slashes downward dramatically.

The patterns of notes have a simplicity that is intentional, not primitive. This is because they are never to stand in the way of the words, or attract more attention than the words. They, therefore, do a good job of serving a very ancient oral tradition.

Want to learn to chant trope? If you are a smooth Hebrew reader and can carry a tune, you can do it! Call me and we'll talk!

Other things you need to know:

1) Extra singers needed for the choir

If you have choral singing experience, and can read basic music, this is your chance. As the choir begins to get ready for the huge concert in the fall honoring Anne Frank, we need extra folks. The concert, to be held at Central United Methodist Church on October 14th will include 200 singers and professional musicians. Your own Cantor Deb will direct. Your commitment would be from July 18th to the concert date. We will start 7:30 PM rehearsals on Wed., July 18th in the Sanctuary. Call for details.

2) Iced tea with Cantor Deb

Always remember that I am available to visit with you, whether you need an ear, a sounding-board, or a shoulder to cry on. I'm in the office as of 11 AM Tuesday — Friday. Call anytime.

B'shira
Cantor Deb Winston





Yiddish Expressions of the Month

Since it's a double issue we'll have four items instead of our usual two.

Bay a shadkhen is nito kayn meeseh kalehs.

To a matchmaker there is no such thing as an ugly bride.

Der Shadkhen firt tsunoyf a vant mit a vant un zugt dernoach, shlog zich kop in vant.

The matchmaker brings together a wall with a wall and then says, "Bang you heads against the walls." The walls are, of course, the families of the prospective bride and groom.

Aleh kalehs zenen shayn, aleh maysim zenen frum.

All brides are beautiful, all the deceased are pious,

Adam iz geveyn der glicklester man; er hot kayn shviger nisht gehat.

Adam was the luckiest man; he had no mother-in-law.

This last one was by Sholem Aleichem. I have to add that Solomon (the wise?) had a thousand mothers-in-law.

Rubin Feldstein



Classes Offered by Jenny Mercer

Summer Torah Tidbits with Jenny Mercer

Read and translate a different small piece of our Torah at each session.

Thursdays, June 14th – August 2nd
5:30 – 6:30 PM (no class July 12th).

Cost: \$28.00 (members) \$36.00 (non-members)

Hebrew literacy necessary. Call **Jenny Mercer** for more info – 254-2448.

Beginning Hebrew with Jenny

Thurs. June 14th – Aug. 9th (no class July 12th)
4:30 – 5:30 PM or 6:30 – 7:30 PM

The Beginning Hebrew classes are full.



ROSH CHODESH — ELUL

Jewish Women's Spirituality Close to Home

Tuesday, August 14th

A PICNIC IN THE PARK OUTSIDE IN NATURE UNDER THE NEW MOON

We will **bring** a picnic dish to share, **welcome** the new moon, **learn** how Rosh Chodesh can strengthen us as Jewish women, **participate** in a meaningful ritual, and **enjoy** our time together.

Bring a dish to share, \$2 for the kitty. We will gather at 6:30 PM at Lake Louise in Weaverville.

Sponsored by Beth HaTephila, Hadassah, and Beth Israel.

In order to have enough materials for everyone, please RSVP to **Lulla Shermis**, 299-9414 or **Marla Drucker**, 236-3095.



Attention parents of new religious
school students:

School starts on
Sunday, September 9th

See **Page 17** for the application form.



Sisterhood News



Thanks to Jackie Itzkovitz for arranging a delightful program for Sisterhood's annual meeting at the Arboretum. Thirty-nine people attended and had an opportunity to hear an interesting guest speaker, honor Lea Schultz and tour the Arboretum if they were willing to brave the heat.

Officers elected for 2007-2008 are:

Co-presidents: *Gloria Pincu and Sherrill Zoller*
Recording Secretary: *Dottie Davis*
Treasurer: *Pam Gretz*
Corresponding Secretary: *Nicki Benatan*
Financial Sec./ Membership: *Nicky Erickson*

Directors -

Program : *Lana Waltzer*
Food: *Catherine Arons and Sally Cohn*
Fund Raising: *Barbara Jaslow*
Social Action: *Linda Kavanaugh*
Good and Welfare: *Gail Sobel*
Parliamentarian: *Shirley Berdie*

Good luck to the new Board and thanks to all Sisterhood members for their support this past year.

Ann Feldstein
Sisterhood President



Brotherhood News



I want to thank all of those who helped make the religious school clean-up project such a huge success. Workers were: *Mark Boyd, Jenny Bunn, Claire Dubin, Ty Erickson, Vic Fahrer, Rubin Feldstein, Ed Fidelman, Chuck Itzkovitz, Eric Naimark, Arnie Sgan, Sam Shermis, Nelson Sobel, and Mort Stein.* Special thanks to *Bob Winston* for coordinating the work, for schlepping all the tools and materials, and for working like a horse. Also, thanks to *Charles Erde* who fed the group with a great lunch on Saturday.

We completed all of the planned work except for the installation of the carpet, which will be done shortly. Brotherhood thanks *Lowell Pearlman* and Pearlman's Carpets for donating the carpet and materials. The front of the school looks much better because of our efforts. Todah rabah to you all!

Join us on Sunday, July 15th for Asheville Tourists baseball. Friday evening, July 27th, Brotherhood will present a revised Brotherhood Shabbat Service. Finally, don't forget the Annual Brotherhood Picnic at Recreation Park on Sunday, August 12th. (See the flyers in this month's Menorah for all the details.)

Please continue to contribute to the JCS and to the Temple Interfaith Fund to help us with our programming and our projects.

Arnie Sgan,
President



Hard Fox:

Asheville's Jewish Food & Heritage Festival

Sunday, October 21st

It's not too early to sign up to volunteer.

Get your choice assignments and times by emailing Barbara today.

barbjas@aol.com



Advertise Your Business & Support the Temple

**Next Advertising Period is
September 2007 — February 2008**

RATES	6 Months	One Year
Business card	\$180	\$330
Quarter Page	\$240	\$440

Space is Limited — Contact Barbara Today

***menorah@bethhatephila.org* — 254-5541**

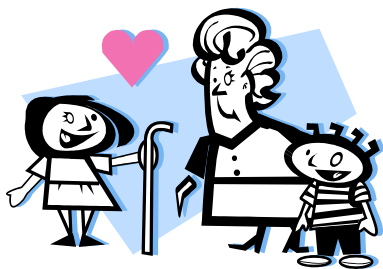
Tzedakah Committee News



Habitat for Humanity Interfaith Build

Our congregation will once again participate in the Habitat interfaith build. This year's build will run from mid-August to early October and will be one of the homes being built in Enka Hills. The home will be built for *Patti Lemone* and her son, who are now living in an old trailer in an area full of crime and drugs. Congregation members will have an opportunity to meet Patti at Shabbat services on July 20th along with *Betsy Warren*, House Sponsor Coordinator, who will introduce her.

Congregants may volunteer to help build by signing up on the 20th or by calling *Ann Feldstein* at 298-9782. No particular construction skills are required. Check with Ann for dates available and further information. Monetary contributions are also needed. Contributions can be sent to the Rabbi's Discretionary Fund and indicated that it is for the Habitat build or directly to Habitat, indicating it is from a BHT member for the Habitat Interfaith Build.



Medical Devices

A variety of medical devices, such as canes, walkers, a boot, a wheelchair and a bath seat are available for loan to any member of BHT, Beth Israel or the JCC in need. Call *Ann Feldstein* at 298-9782 if you wish to borrow any device.

SHELTER SERVING



CBHT's volunteer servers and our volunteer shopper and cook, *Barb Stein*, provided lunch to the residents of ABCCM Men's Shelter on Friday, June 15, 2007. Kudos to *Allan Sher*, *Rusty Schapiro*, *Eric Naimark* and *Neal Greenberg* for their good-natured food preparation and serving skills.

I want to take this opportunity to give special thanks to *Barb Stein* for all her hard work and efforts that helped so much to make this year so successful. Many of you may not know that Barb, often and single handedly, does the shopping and cooking for these monthly mitzvot. Barb, thanks so much.

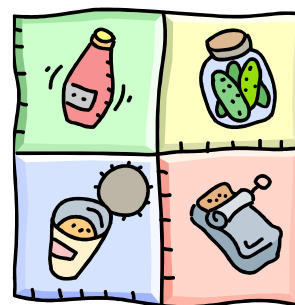
Our list of volunteers for this mitzvah continues to grow. This year, so far, we have had FIVE new volunteers for the ABCCM Men's Shelter Servings! Participating in these servings is a wonderful way to fulfill the tzedakah of our congregational goals.

Please call or e-mail me for details.

Linda Kavanaugh

Phone: 828-683-6289

E-Mail: Bubladdie@aol.com



FEED THE HUNGRY

Your contributions of non-perishable food items are needed now more than ever.

Temple Happenings



OPEN HOUSE

The Membership Committee is planning an Open House for Sunday, August 26th at 2 PM to introduce unaffiliated members of the Jewish community to our congregation's spiritual, educational and social programs.

If you know anyone who might be interested in learning about our congregation, please e-mail **Ted Zoller** at tzoller@reloz.com or call 658-1748 with their name, address, phone number, and e-mail address so that an invitation can be sent.

Gail Sobel



July & August Onegs

- July 6 Shabbat Picnic — **5:30 PM**
- 13 In Honor of Lea Schultz's Retirement.
- 20 Dorothy Golf & Cynthia & George Zaslow
- 27 Alex Lord
- Aug. 3 Shabbat Picnic — **5:30 PM**
- 10 Dena Sklaroff & Myra Hinton
- 17 **OPEN**
- 24 **OPEN**
- 31 Catherine Arons; Shirley & John Berdie's 61st Anniversary; and Dionne & Gil Kempenich's 40th Anniversary



To my beloved CBHT:

TODAH RABAH for celebrating Xandy's bar mitzvah with us! When I looked out from the bimah and saw all the smiling, supportive faces of my haverim, I felt the full impact of belonging to such a warm, loving congregation. Such a blessing does not just happen, it takes the right leaders to create the environment in which our kind of camaraderie can grow and thrive. Lea, you've been a darling, so efficient, always patient, kind and calm, a blessing for someone excitable like me, especially through two b'nei mitzvah. Edward and Ellen, Unger Hall looked like a palace for our Shabbat dinner and oneg, and your constancy and attention to details are indispensable strengths to any endeavor in the building. You also made working in the temple kitchen a successful pleasure for Cindy Warlick, our caterer.

Claire Dubin and Jenny Mercer, Xandy's Religious School teachers for the past three years, you have nurtured his thinking and Hebrew skills, responded to his inquisitive mind, and filled him with information and concepts that will serve him a lifetime. Cantor Deb, your talented and playful musical direction is an indescribably sweet blessing that delights not only our ears but also our souls, and Xandy greatly enjoyed your coaching. And Rabbi Ratner, your shepherding and academic guidance, for Xandy, for me, for all of us, comes with such a warmth and sensitivity, it is easy to know that God is fully present in our temple through you. The culminating experience of this simcha, as well as Paul's three years ago, and of simply BEING a member of CBHT for the past seven years, has been enriching and inspiring, and has surpassed my dream of a Jewish home/community... with abounding love and appreciation, THANK YOU!!!

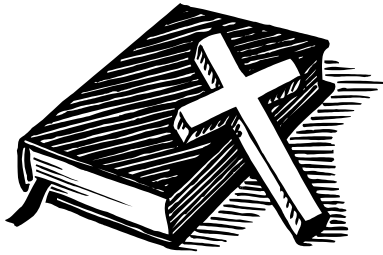
Ellen Rubenstein Chelms and Family



Wanted! A few good men (and women)

The BHT Army Corps of Engineers (the House Committee) could use some talented OCCASIONAL help. If you have skills in electrical wiring, plumbing, carpentry, masonry, etc. and are willing to volunteer once in awhile, your skills would be greatly appreciated. We promise not to burn you out! Please contact **Bob Winston** at 280-3800 or rbwinston@bellsouth.net.

More Temple Happenings



Christianity: An In-depth Look

Presented by Dr. Samuel Shermis

(as well as several guest speakers.)

Starting date: Thursday, October 25, 2007

Ten class sessions: Thursdays at 7:00 PM

Subjects will include (but are not limited to):

- What do we know about Christianity? What don't we know?
- What do we find disturbing? What do we find appealing?
- What are the varieties of Christianity in this country?
- What are the sources of Christianity? — answers which you may find surprising.
- What is the origin of anti-Semitism?
- How did Christianity become the worldview of Europe between 315 C.E. and the 20th Century?
- How did the various splits—Greek Orthodox and the Protestant Reformation—come about?
- How did Christianity influence art, literature, philosophy, exploration and colonialism?
- Why did the Crusades have an impact that has survived until the present?
- What was the Inquisition and what was its function?
- What is the theory that Christianity provided the ideological background for the Shoah?
- How do we come to understand our Christian neighbors? How will they come to understand us?
- What models of communication exist for the future?
- What is to be decided, by whom, when, and to what end?

Please contact Sam (299-9414, shermis@ioa.com) to discuss your thoughts, comments and interest.



Security Matters

The work of the Security Task Force, to review our security needs and develop a CBHT Security Manual, has been completed. We now have a comprehensive manual covering emergency responses under a variety of circumstances, defining security responsibilities and contacts, outlining our building security policy, and providing guidelines for various possible situations. There are copies available in the Temple's administration office, if you would like to have one.

Thanks to the members of the task force – Gil Kempenich, Bob Davis, Bob Winston, Claire Dubin, Tom Denels, Eric Scheffer, and Gail Ashley-Smith for their participation, dedication and effort. The security of our buildings has already been strengthened in a number of physical ways. Our manual will serve as an effective guide for implementation of security measures.

While we thankfully have not been a target, and we have excellent relations in the Asheville community, we recognize that we do run some risk. We recognize that we cannot protect ourselves from all possible situations, but we must prepare should an intrusive event arise.

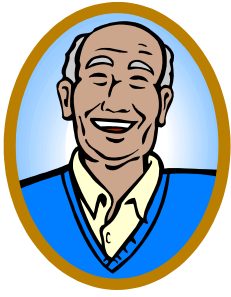
Implementation of the security plan will now be undertaken by the **Security Committee**. This will involve the addition of security measures, getting buy-in to security from the Temple Board and all congregants, training, and oversight of the security function. But we cannot just let others take care of things. We must all care about security. Active cooperation with our security procedures and your powers of observation are two of the most important assets we have.

Think Security

Can we be secure and welcoming at the same time? For sure we can. Here is what it takes:

- Be watchful and report suspicious activity.
- Know our buildings — report anything you observe to be out-of-place or missing.
- Actively cooperate with security directions, procedures and ticket policies.
- Help create a culture that is secure and welcoming; care about this issue — and let people know that you do.
- Support our Security Committee as it implements our security plan.
- Better yet, **help us implement the Security Committee's important work! Just let me know.**

Mark Levine, Security Manager



THE SACRED AGING COMMITTEE; WHO ARE WE? WHAT ARE WE ABOUT?



DO YOU HAVE TO HAVE GREY HAIR
(PERHAPS HIDDEN BY HAIR COLOR)?
READ THIS ARTICLE IF YOU HAVE GREY HAIR,
AND EVEN IF YOU DON'T.
IT'S ABOUT ALL OF US!

Sacred Aging sounds oh, so mysterious! Not true at all. It simply means that we care about one another, whether we are "older" or have a parent, a sibling, a relative, or friend who is aging. We will all age eventually. Yes, taxes aren't the only inevitables of life!!

The Sacred Aging Committee is dedicated to addressing issues which include, but are not limited to, the physical, mental and spiritual aspects of aging. We are meeting to find ways to bring all members of our congregation information and activities which are of benefit to those who are already aging, and those who won't be there for a while. Perhaps you are part of the "sandwich" generation, who are caring for your children, and the concerns, or care, of your aging parents. If you're part of this group, you should be interested in our committee and the programs and activities which we are planning for the next year (beginning after the High Holy Days).

We are very much about "connecting" members of our congregation, one to another. Studies show that people who have social connections are healthier and live longer and happier lives. Maybe you are already

connected. But, it would be an act of kindness (a mitzvot) if you could spare some time to help make sure that the person, or couple, you see at services (but seems to be by themselves) gets connected.

So, we have some really good ideas on how to get people connected, and ways to inform our congregants about issues of aging that affect all of us, no matter what age we are. We need your help. Join our committee. Come to a meeting. Give us a commitment to help. Whatever time you have to spare is fine. Some of us are committed for the long term, and others for a short term. We invite you to join with us as concerned and caring congregants of all ages.

For further information about our *committee*, or when we are meeting, e-mail **Arlene and Bernie Farrow** at farrow131@verizon.net or give us a call at 828-658-3161. You can also speak with Cantor Deb who co-chairs this committee with us.

Thanks for reading through this article. Now, send us an e-mail or give us a call. Let us hear from you.

Arlene and Bernie Farrow and Cantor Deb Winston

PREVIEW OF THE HIGH HOLY DAYS SCHEDULE

Erev Rosh HaShana	September 12 th	7:30 PM
Day 1 of Rosh HaShana	September 13 th	10:00 AM
Day 2 of Rosh HaShana	September 14 th	10:00 AM
Memorial Service (Riverside Cemetery)	September 16 th	1:00 PM
Kol Nidre	September 21 st	7:30 PM
Yom Kippur*	September 22 nd	10:00 AM
Build Sukkah	September 23 rd	12:00 noon

* **Dr. Richard Chess**, poet and professor of literature, will again lead the discussion at the afternoon study group at 1:30.

Our Temple Family



Mazel tov to **Claire Orenzow** who has been selected as the recipient of the 2007 National Hadassah Leadership Award for the Asheville-Hendersonville Chapter. Claire was chosen by her peers in recognition of outstanding commitment to the further development of current and future leadership in Hadassah.



Get Well Wishes to:

Lawrence Cohen
Edward Cooper
Gary Cooper
Doug Czech
Adam Randal Eastus
Paul Ford
Riva Gordon
Ethel Gross
Judy Haller
Ed Kaplan
Marnie Kaufman

Daniel Lipman
Seymour Meyerson
Debbie Newmark Mulford
Rabbi Ratner
Eleanor Schockett
Ariel Sharon
Sylvia Straus
Jan Till
Natalie Trottier
Lana Waltzer
Norman Willis



A million thanks to *Ty Erickson, Rubin Feldstein, Lennie Greene, Sandra Layton* and *Bob Winston* for their hard work in bringing box loads of books to the temple for our used book sale.

Syd White



Movie – DVD – “Flight 93”

We just saw the DVD of the movie “Flight 93,” the true story of the September 11, 2001 flight that the heroes crashed into a Pennsylvania field. The movie honors their memory with respect, educates why they are heroes, is upsetting because it’s a true story, and is done in good taste. The families of the victims worked closely with the director and writer to make it as authentic as possible.

We wanted to let you know about it because one of our former congregants and JCC friends, whom many of you know, lost her beloved daughter, Elizabeth, on that flight.

Esther Heymann Wainio, Elizabeth’s mother, grew up in Asheville and often came here to stay for the summer with her daughters Elizabeth and Sarah.

When you see the movie, you can feel a special connection to Elizabeth Wainio and her mother who are depicted throughout the movie, as are all the heroes of that brave plan of action.

Together, we honor the memory of all of them with deep sadness and respect.

Sincerely, *Susan Ratner*



Condolences to *Stuart Witten* on the death of his mother, *Billie*.

ROSE ROSE MEMORIAL KITCHEN FUND



URGENT! The large freezer in our kitchen is about to outlive its lifespan. A new freezer is needed by the end of the summer. The estimated cost is about \$2,000. As you know, Rose was very involved in Oneg Shabbats and other Temple functions. This project will be a great way to honor her. One member already has made an initial contribution of \$200. Please contribute so that we may reach our goal. Be sure to mark your checks **“Kitchen Fund.”** Any excess funds will be used toward the new tablecloths.

Leah Karpen



A huge “thank you” to the Brotherhood, Bob Winston, and all of the volunteers for cleaning up and painting our school. It looks great! We appreciate everyone’s efforts.



Celebrate With Our Temple Families

JULY BIRTHDAYS

1 Renee Augins	18 Lory-Ann Rubinstein
1 Brett Farson	20 Taylor Esterson
1 Dorothy Fligel	20 Katie Gershon
2 Ashley Marder	20 Heather Goldstein
3 Paul Trent	20 Peter Mosheim
3 Carrie Winkelman	21 Abraham Ainspan
4 Paul Chelmis	21 Linda Arnold
5 Pete Gretz	21 David Berkey
6 Sharon Fahrer	21 Zeke Goldstein
6 Bernard Farrow	21 Arnold Mandell
6 Amanda Goldfarb	22 David Block
6 Larry Layton	22 Gene Knoefel
6 Karleigh Ring	22 Leslie Langberg
6 Paul Samuels	22 Jane Novoselsky
6 Jacob Weiss	23 Stanley Arnold
6 Sarah Weiss	23 Barbara Derfel
7 Leah Karpen	23 Jan Parks
8 Aileen Pearlman	23 Josh Ratner
8 George Zaslow	24 Jason Zoller
9 Kathy Rosenberg	25 Cindy Feiler
9 Ezra Stuelzel	25 Rania Shlein-Dellinger
9 Jackie Westle	27 Salli Pearlman
10 Joann Edwinn	27 Armand Speir
11 A .N. Kaplan Jr.	28 Harris Livingstain
12 Rita Reiser	28 Isaac Paul
12 Noah Ratner	28 Stephen Wall
13 Arlene Farrow	29 Marcy Sirkin
14 Samuel Sholder	30 Scott Adams
15 Hilary Paradise	30 Sharon Plotkin
15 Carmen Procida	30 Rebecca Wall
16 Anthony Joseph	31 Ellen Knoefel
16 Gerald Plotkin	31 Zachary Miller
17 Barbara Stein	31 Dawna Wade

JULY ANNIVERSARIES

1 Bob & Sonja Hruska
1 Gene & Ellen Knoefel
2 Jeremy & Heather Goldstein
4 Paul & Shirley Ford
7 Travis & Rania Shlein-Dellinger
8 Buddy & Mary Riesenber
8 Simon & Susan Senzon
9 Brad & Ellen Fisher
10 Marty & Kathryn Mann
13 Gil & Suzanne Lampner
15 Jeff & Debra Slosman
20 Max & Carolyn Mallis
30 Bob & Laurie Baker
31 Larry & Elise Israel



Enjoy those lazy, hazy days of summer — I know I will!

The next Menorah deadline is August 15th!

Barbara Jaslow — menorah@bethhatephila.org — 254-5541



Celebrate With Our Temple Families



AUGUST BIRTHDAYS

2	Hannah Procida	17	Malenda Matthews
2	Kendall Soule	18	Anthony Adams
3	Debra Ullman	18	Joel Harris
4	Louis Gud	18	Robert Hruska
4	Gloria Pincu	20	Abe Goldstein
4	Dana Smith	20	Eliannah Vargus
5	Phoenix Shlein-Dellinger	21	Tyra Goodman-Levine
6	Eric Scheffer	21	David Zimmerman
7	Larry Kavannaugh	23	Debra Cooper
7	Peter Oppenheimer	23	Greg Crawford
8	Robyn Crawford	23	Jerry Dave
8	Sydelle White	24	Jeffrey Dave
9	Max Mallis	24	Leo Finkelstein
11	Michael Goldfarb	25	Toby Huter
11	Susan Ratner	25	Lynne Weinrib
11	Betsy Wall	25	Norman Willis
12	Elise Israel	26	Mark Hinton
13	Samuel Feldman	26	Marilyn Patton
13	Stephanie Schulman	26	Irving Studenberg
13	Virginia Tocaben	27	Zane Ullman
14	Shirley Cohen	29	Catherine Arons
15	Natale Kramer	29	Laurie Corets
15	Alex Lord	29	Herbert Gallinger
16	Herbert Kay	30	Michael Blatt
16	Kevin Roberts	30	Jack Lowell
17	Merilyn Kaplan Jr.	31	Dionne Kempenich

AUGUST ANNIVERSARIES

2	Mark & Cindy Vandewart
3	Joseph & Judi Goldenberg
4	Jeff & Alicia Younger
5	Marvin & Susan Feinblatt
8	Stephen & Donna Rinsler
9	Bo Farson & Idelle Packer
9	Robert & Myrna Shuster
14	Arnold & Doris Sgan
17	Alex & Virginia Tocaben
18	Frank & Christina Abrams
18	Norman & Judith Willis
19	Leslie & Sandy Langberg
19	Philip & Carol Cohen
20	Jerry & Barbara Dave
22	Joel & Beverly Harris
23	Carl & Laurie Johnson
25	Markus & Ilene Procida
26	Dana & Rachel Smith
28	Joe Harrison & Stephanie Cooper
29	Samuel & Lulla Shermis
31	John & Shirley Berdie



NOW HIRING AT THE JCC!

Youth Director

FT director for summer day camp, after school and teen programs. Candidates should have experience working with children and strong management and administrative skills. Prior day camp experience and knowledge of Jewish culture, values, and traditions preferred. B.A. in education, recreation or related field. NC Admin Credential or willingness to obtain. Send resume by July 6th to: Asheville JCC, 236 Charlotte Street, Asheville NC 28801 Attn: Executive Director.

Evening/Weekend Receptionists

PT receptionists for periodic evening and weekend reception desk work. Hours and scheduling vary. Must have great customer service skills and be at least 18 years old. Knowledge of Jewish culture and traditions a plus. Download application from www.jcc-asheville.org and email to michelle@jcc-asheville.org, or apply in person at the JCC.

Facilities Assistant

PT periodic evening and weekend work doing event set-up/break-down, building supervision during events, and associated janitorial work. Hours and scheduling vary. Must be able to lift 50 pounds and be at least 18 years old. Download application from www.jcc-asheville.org and email to jay@jcc-asheville.org, or apply in person at the JCC.



Gifts and Memorials



The Congregation and its Trustees gratefully acknowledge the following gifts:

RABBI'S DISCRETIONARY FUND

<u>DONATED BY</u>	<u>IN MEMORY OF</u>	<u>DONATED BY</u>	<u>IN HONOR OF</u>
Rubin & Ann Feldstein	<i>Edna Feldstein</i>	Shirley Cohen	<i>Brett Berger's Bar Mitzvah</i>
Robert & Mercedes Kaufman	<i>Albert Kaufman</i>	Shirley Cohen	<i>Xandy Chelmis' Bar Mitzvah</i>
Shirley Krause	<i>parents, husband, and brother (Lester Golden)</i>	Tammie & Jeremiah Mattysse	<i>with gratitude to Rabbi Ratner</i>
Arlene & Bernie Farrow	<i>Michael Gould</i>	Tammie & Jeremiah Mattysse	<i>in honor of our marriage</i>
Dorothy Fligel	<i>Myrtle Cogburn Vrabel</i>	Tammie & Jeremiah Mattysse	<i>with gratitude to Carrie and Norm Winkelman</i>
Marvin Nockow	<i>Marjorie Nockow</i>	Tammie & Jeremiah Mattysse	<i>with gratitude to Ilene Katz</i>
Barbara & Mort Stein	<i>Alice Butchers</i>	Ina & Sidney Singer	<i>Child Maltreatment Evaluation Center</i>
		Judy & Zane Duncan	<i>Child Maltreatment Evaluation Center</i>

GENERAL FUND

<u>DONATED BY</u>	<u>IN MEMORY OF</u>
Roderick Worley	<i>Myrtle Vrabel</i>
Joan & Bill Rocamora	<i>Myrtle Vrabel</i>
Beatrice Greene	<i>Dorothy Gingold Peck</i>
Dianne & David Worley	<i>Myrtle Vrabel</i>

INTERFAITH FUND

<u>DONATED BY</u>	<u>IN MEMORY OF</u>
Leah Karpen	<i>Emanuel Robinson</i>

MUSIC FUND

<u>DONATED BY</u>	<u>IN MEMORY OF</u>
Barbara & Howard Jaslow	<i>Ted Cohen</i>

JOSEPH DAVE CHOIR FUND

<u>DONATED BY</u>	<u>IN MEMORY OF</u>
Hyman Dave	<i>Eva Dave</i>
Hyman Dave	<i>Myrtle Vrabel</i>

B. GOLDSTEIN RELIGIOUS SCHOOL FUND

<u>DONATED BY</u>	<u>IN MEMORY OF</u>
Sidney Tureff	<i>Sara Goldstein</i>

BUILDING FUND

<u>DONATED BY</u>	<u>IN MEMORY OF</u>
Gloria & Don Pincu	<i>Rose Weinstein</i>

LANDSCAPING FUND

<u>DONATED BY</u>	<u>IN MEMORY OF</u>
Barry & Linda Brandt	<i>Gerald Brandt</i>
Beatrice Greene	<i>Stanley Greene</i>

MOTHER'S GARDEN FUND

<u>DONATED BY</u>	<u>IN MEMORY OF</u>
Allen Sher	<i>Ruth Sher and Sylvia Sher</i>

MEMORIAL FUND

<u>DONATED BY</u>	<u>IN MEMORY OF</u>
Gloria & Dan Pincu	<i>William Weinstein</i>

TZEDAKAH FUND

<u>DONATED BY</u>	<u>IN MEMORY OF</u>
Barbara & Howard Jaslow	<i>Louis Jaslow</i>
David Berkey and Jack Lowell	<i>Xandy Chelmis' Bar Mitzvah</i>

ENDOWMENT — RASHI FUND

<u>DONATED BY</u>	<u>IN MEMORY OF</u>
Leonard & Helaine Greene	<i>Arthur & Yetta Greene</i>

ROSE H. ROSE FREEZER FUND

<u>DONATED BY</u>	<u>IN MEMORY OF</u>
Leah Karpen	<i>Rose H. Rose</i>

HARDLOX FUND

Shayna Stone	Sam & Lulla Shermis	Lana Waltzer	Paula Isenberg
--------------	---------------------	--------------	----------------



Yahrzeits



The Yahrzeit policy at our Temple is as follows:

- ✧ The Anniversary date can be celebrated either in the English calendar or the Hebrew calendar.
- ✧ A letter to remind you about your upcoming Yahrzeit is sent to you two weeks before the actual date.
- ✧ The name of your loved one is read at the Friday evening service immediately before the date of the Yahrzeit.
- ✧ If your Yahrzeit actually falls on a Friday, it will be read the previous Friday.
- ✧ If, for any reason, changes must be made, please call the Office before the scheduled date of service.
- ✧ Please keep the Temple Office informed of any incorrect dates or new dates you wish to include.
- ✧ It is important to give the Office the complete date (month/day/year) and whether it is the English or Hebrew date.
- ✧ Please take a moment to update the Office now. Thank you.

July 6, 2007

Bertha Corets
 Jeffrey Bruce Elster
 Celia Fine
 William Fox
 Bernard Fruhauf
 Charles Grand
 Sam Kanner
 Katie Karesh
 Estelle Lillian Miller
 Joseph Nathan
 Stefan David Reiser
 Jean Potts Riesenber
 Isadore Schuster
 Charna Silver
 Edmund Silverman
 David Thaler
 Bettye Winston

July 13, 2007

Jack Abramowitz
 William Beardsley
 Ruth Levy Cutter
 Meyer Epstein
 Rebecca Friedman
 Isaac Gershon
 Celia Golechen
 Nathan Master
 Jeanette Platt
 Michael Robinson
 Sam Schapiro
 Sylvia Shapiro
 Gabriel Stickle
 Terese Trent
 Ruth Weber
 Mitchell Weiner

July 20, 2007

Moretta Alexander
 Shirley Blomberg
 Pauline Blumenreich
 Nessim William Chicurel
 Harold J. Dyckman
 Naomi Goldman
 Benjamin Goodkin
 Abraham Greenberg
 Berndt Kahn
 Paul Morgenstern
 Matthew Senfeld



July 27, 2007

H. J. Aronstam
 Morry Bard
 Enid Berdie
 Evelyn Fisher
 Lillian Gallinger
 Gerald N. Goodman
 Anya Green
 Fred Kaunitz
 Albert Kodack
 Edward Kramer
 Harry Levine
 Helen Pozner
 Jennie Rosenstein
 Ira J. Rosenstock
 Charlotte Winner
 Helen Zageir
 Celia Zaslow

Contact	E-Mail	Telephone
Dawna Wade , Temple Administrator M-Th: 9:00 AM – 4:00 PM Friday: 9:00 AM – 1:00 PM	admin@bethhatephila.org	253-4911
Gil Kempenich , Temple President	president@bethhatephila.org	665-1125
Rabbi Robert Ratner	rabbi@bethhatephila.org	296-1395 (Emergency Answering Service)
Cantor Debbie Winston	cantor@bethhatephila.org	253-4911



YAHRZEITS



The Yahrzeit policy at our Temple is as follows:

- ✧ The Anniversary date can be celebrated either in the English calendar or the Hebrew calendar.
- ✧ A letter to remind you about your upcoming Yahrzeit is sent to you two weeks before the actual date.
- ✧ The name of your loved one is read at the Friday evening service immediately before the date of the Yahrzeit.
- ✧ If your Yahrzeit actually falls on a Friday, it will be read the previous Friday.
- ✧ If, for any reason, changes must be made, please call the Office before the scheduled date of service.
- ✧ Please keep the Temple Office informed of any incorrect dates or new dates you wish to include.
- ✧ It is important to give the Office the complete date (month/day/year) and whether it is the English or Hebrew date.
- ✧ Please take a moment to update the Office now. Thank you.

August 3, 2007

Constance Ruth Bauman
 Betty Bernstein
 Harry Blatt
 Albert Goldstein
 Theodore Goldstein
 Paul Lerner
 Ruth Levine
 Ethel Livingston
 Jeffrey London
 Jason McCarthy
 Benjamin Milburg
 Charles Miller
 Arthur Oppenheimer
 Rose Patla
 Beverly Petersiel
 Martha Pincu
 Sylvia Zoller

August 10, 2007

Sidney Berdie
 Charles Glass
 Alfred Victor Goldberg
 Bernhard Gordon
 Eugene Green
 Francis Holt
 Sue Jenkins
 Jacob Karney
 Mitchell Kaufman
 Hyman Koling
 Molly Leavitt
 Catherine Morgenstern
 Edith Ruth Newman
 Paul Novoselsky
 Lorence Rapoport
 Sylvia Resnikoff
 Jane Shaver
 Selma Strauss
 Morris Wolf

August 17, 2007

Maria Abramowicz
 Ralph Berdie
 Maurice Berkey
 Irving Cantor
 Robert A. Goldman
 Kurt Isenberg
 Victor Mills
 Michael Richman
 Minnie Reiser Samek
 Max Shuster
 Frances Silver
 Maxwell Silverstein
 David Samuel Smolowitz

August 24, 2007

Derek Alexander
 Mary Cohen
 Jeanette Levine
 Lawrence Mills
 Fred Opes
 Samuel Peyser
 Belle Feinstein Rosen
 Julian Silverman
 Barbara VanBuskirk



August 31, 2007

Moses Adler
 Terry Oppenheimer Berkowitz
 Martin Blate
 Sylvia Blate
 Bernard Blumenreich

Seymour H. Fligel
 Fannie Greenberg
 Charlotte Komisser
 Joseph Allen Larson
 Charles Macy

Allen Mandell
 Gertrude Matthews
 Elaine Meyers
 Charles Naness
 Joseph Patla

Dorothy Ratner
 Daniel Robinson
 Jean Sherman
 Alfred A. Smith
 Eva Rose Weiner

PLAY BALL!!

**Join Brotherhood at the Baseball Game
Sunday, July 15 - 2 PM
McCormick Field**

**Asheville Tourists vs.
Greenville Drive**

Cost: \$5 per person



Send check payable to CBHT BROTHERHOOD to
the Temple office, attn: Brotherhood
No later than Monday July 9.

We must have your check no later than July 9th!
Your tickets will be waiting for you at the gate prior to game time.
Car pooling at Temple parking lot 1:15 PM

For more info call Allen Sher at 299-9353 or the Temple office 253-4911

Temple Picnic

Sponsored by Beth HaTephila Brotherhood and
Sisterhood

Sunday August 12

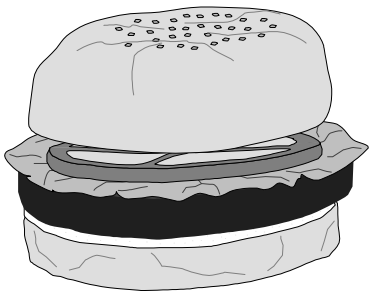
Noon to 4 PM

Food will be served beginning at 1 PM

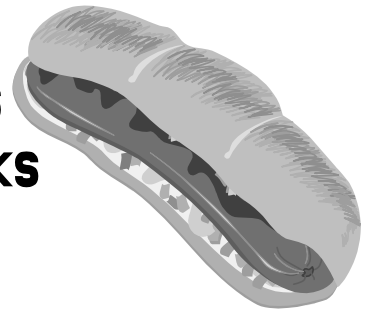
**Recreation Park Picnic Area
Gashes Creek Road, off Azalea Road**

Convenient parking on the picnic grounds

**NO ADMISSION CHARGE
but voluntary contributions are appreciated.**



Menu:
Hot Dogs, Hamburgers
Potato Salad, Soft Drinks
Watermelon, Dessert



KITE FLYING
DUNK CANTOR DEB!!

We want to have enough food for everyone, so please let us know you're coming!
Call the Temple office, 253-4911, no later than Thursday August 9th.

July 2007

Sunday	Monday	Tuesday	Wednesday	Thursday	Friday	Saturday
1	2	3 Fast of Tammuz	4 Independence Day Office Closed	5 4:30 PM Adult Beg Hebrew 5:30 PM Summer Torah Tidbits 6:30 PM Adult Beg. Hebrew	6 5:30 PM Picnic 6:30 PM Early Shabbat Service	7
8	9 NO Social Justice Mtg.	10	11 12:00 PM Living Wage Mtg	12 NO HEBREW CLASSES	13 7:30 PM Kabbalat Shabbat Service	14
15	16	17	18 8:30 AM -3:30 PM Asheville Quilt Guild 6:30 PM Cong. Choir	19 4:30 PM Adult Beg Hebrew 5:30 PM Summer Torah Tidbits 6:30 PM Adult Beg. Hebrew	20 7:30 PM Kabbalat Shabbat Service	21
22	23	24 7:30 PM Board Meeting Fast of Tisha B'Av	25 6:30 PM Cong. Choir	26 4:30 PM Adult Beg Hebrew 5:30 PM Summer Torah Tidbits 6:30 PM Adult Beg. Hebrew	27 7:30 PM Brotherhood Shabbat Service	28
29	30	31	Congregation Beth HaTephila 828-253-4911			

August 2007

Sunday	Monday	Tuesday	Wednesday	Thursday	Friday	Saturday
<p align="center">Congregation Beth HaTephila 828-253-4911</p> <p>CBHT Annual Picnic the 12th at 12:00 noon</p> <p>CBHT Open House the 26th at 2:00 PM</p>			1	2 4:30 PM Adult Beg Hebrew 5:30 PM Summer Torah Tidbits 6:30 PM Adult Beg. Hebrew	3 <i>5:30 PM Picnic dinner - young families</i> 6:30 PM Early Shabbat Service	4
5	6	7	8	9 4:30 PM Adult Beg Hebrew 5:30 PM Summer Torah Tidbits 6:30 PM Adult Beg. Hebrew	10 7:30 PM Kabbalat Shabbat Service	11
12 12:00 PM -4:00 PM CBHT Annual Picnic	13	14	15 12:00 PM Living Wage Mtg Menorah Deadline	16	17 7:30 PM Kabbalat Shabbat Service	18
19	20	21	22 8:30 AM -3:30 PM Asheville Quilt Guild	23	24 7:30 PM Kabbalat Shabbat Service Honoring our Elders	25 JCC Gala
26 10:00 AM Religious School Faculty Meeting 2:00 PM OPEN HOUSE at BHT	27	28 7:30 PM Board Meeting	29	30	31 7:30 PM Kabbalat Shabbat Service	



Your Friends in the Mountains!™

GAIL ASHLEY-SMITH

Broker/REALTOR/ABR
ACCREDITED BUYER REPRESENTATIVE

Fax
(828) 683-0399

(828) 683-9969

Cell
(828) 301-6002

ashleyfinchrealt@bellsouth.net



Elise Israel
BROKER ASSOCIATE

OFFICE (828) 350-1005
FAX (828) 253-2206
CELL (828) 230-2943

www.bearcreekrpm.com



e-mail: israel@ioa.com

Robert S. Pozner, M.D.
Internal Medicine-Board Certified
Suite 305; 445 Biltmore Center
Asheville, NC 28801

(828) 253-1482

Centrally located near the hospital with free parking.
New patients welcome.

Accepts Medicare (participating) as well as participating for many private insurances (Aetna, Blue Cross\Blue Shield, Cigna, Crescent, HCS, Medcost and United Health Care). Also happy to see Private Pay or work with other insurances.

Timely appointments available.

HOME TECH SERVICES, LLC

Your Projects Done Right The First Time

Bob Winston

828-687-3660 (Office)
828-280-3800 (Mobile)



**PLEASE SUPPORT
OUR ADVERTISERS**



Keller Williams Realty Serving Western NC

Joe Derfel

Broker

Your Satisfaction is the Measure of My Success

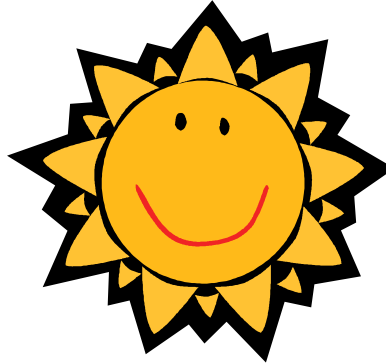
Cell (828) 699-4514; Office (828) 290-1012;
Fax (828) 290-1010;

E-mail – joederfel@joederfel.com

**CONGREGATION BETH HATEPHILA
43 NORTH LIBERTY STREET
ASHEVILLE, NC 28801-1822
(828) 253-4911**

**Non-Profit Org.
U.S. Postage
PAID
Asheville, NC
Permit # 78**

**ROBERT J. RATNER, PH.D. RABBI
GIL KEMPENICH, PRESIDENT**



**Temple Food Cards — good for all of your summertime needs.
Available for Earth Fare, Fresh Market, Greenlife, & Ingles.**

July & August Dates to Note

July 15th
July 27th
August 12th

Asheville Tourists game
Brotherhood Shabbat
Brotherhood Picnic

August 15th *Menorah* Deadline
August 26th CBHT Open House